

DEAR DAG DISPATCH TRI-STATE GROTTO



STEPHENS GAP CAVE, JACKSON CO, AL

VOL. #35

ISS. #8

AUG

2020

#83

The **DEAD DOG DISPATCH** is a publication of the **TRI-STATE GROTTTO** of the NSS. The OPINIONS expressed herein are not necessarily those of the EDITOR, the GROTTTO, nor the NSS. Material that is unsigned may be attributed to the EDITOR. Material contained within this PUBLICATION may be reproduced by the NSS and its GROTTOS, provided that PROPER CREDIT is given to the **DEAD DOG DISPATCH** and the AUTHOR.

The **DEAD DOG DISPATCH** is a NON-PROFIT monthly newsletter published by the **TRI-STATE GROTTTO of the NSS**. SUBSCRIPTION RATES are \$12.00 per year to SUBSCRIBING MEMBERS, and **FREE** with FULL and ASSOCIATE MEMBERSHIPS to the **TRI-STATE GROTTTO**.

TRI-STATE GROTTTO OFFICERS

CHAIR - John DiCarlo - 301-432-2323
j.dicarlo@myactv.net

V-CHAIR - Bob Bennett - 304-671-0344
gimpycaver@comcast.net

TREASURER- Elysia Mathias – 443-695-5350
emathiasmba@gmail.com

SECRETARY – Donald ‘Doc’ Phillip
703-583-0390
thosearemagicbeans@gmail.com

Member At Large - Tom Griffin - 240-676-3184
A1TopCatDesign@gmail.com

Conservation Chair -

Equipment Chair - Doc Phillips - 703-583-0390
thosearemagicbeans@gmail.com

Membership Chair - Bob Bennett -304-671-0344
Newsletter Editor --- Bob Bennett ----304-671-0344

Funding - Paulette Bennett -304-671-8317

P R Chair -----

Safety Chair -----

Program Dir -----

Youth Chair -----

TRI-STATE GROTTTO MEMBERSHIP DUES ARE AS FOLLOWS:

FULL MEMBERSHIP ----- \$10.00 (Must be NSS)

ASSOCIATE MEMBERSHIP---\$12.00 (Non-NSS)

DEAD DOG DISPATCH

V.#35

I.#8

AUG

2020

#84

SUBSCRIBING MEMBERSHIP-\$12.00 (Non-Voting)
FAMILY MEMBERSHIP ----- \$2.00/FAMILY
LIFETIME MEMBERSHIP ---- \$200.00 (Must be NSS)
SUSTAINING MEMBERSHIP ---- \$50/YEAR
(SUSTAINING-\$50/yr until \$200 total is met)
(FULL FAMILY-must be NSS)(Voting rights if over 16)
(FAMILY ASSOCIATE-non NSS)(Voting over 16)

Payment of DUES can be made at MONTHLY MEETINGS
or can be SENT TO:

ELYSIA MATHIAS, TREASURER
TRI-STATE GROTTTO of the NSS
133 DEVONSHIRE RD.
HAGERSTOWN, MD 21740
443-695-5350

E-MAIL: emathiasmba@gmail.com

For MEMBERSHIP INFORMATION contact:

BOB BENNETT, MEMBERSHIP CHAIR
TRI-STATE GROTTTO of the NSS
464 HUCKLEBERRY DR.
GERRARDSTOWN, WV 25420-0211
304-821-4621

E-MAIL: gimpycaver@comcast.net

** The photo on this month's cover was furnished
by Ashley Hitchcock. It shows Ashley standing on
the pedestal in Stephens Gap Cave, Jackson Co,
AL.

**** Don't forget, the **JONES QUARRY BOOKLET** is
ALMOST GONE! There are 10 left! If you are interested in
purchasing a copy of the BOOKLET, contact **BOB**
BENNETT 304-821-4621(H) or 304-671-0344(C) E-MAIL
at gimpycaver@comcast.net

The copy will cost \$6.00 each plus the cost of shipping!

*****10 LEFT!*****

**WE NEED EVERYONE TO KEEP THINKING ABOUT
VOLUNTEERING FOR AN OPEN POSITION. WE
STILL HAVE 4 POSITIONS OPEN!
PLEASE GIVE IT SOME THOUGHT. WE NEED YOUR
SUPPORT!**



CAVING EVENTS

2020

AUG 6 --- Root Beer Float Day
AUG 7 --- International Beer Day
AUG 11 --- National Son & Daughter Day
AUG 12 --- National Middle Child Day
AUG 12 --- TSG Meeting – 7pm - Virtual
AUG 13 --- Left Handers Day
AUG 16 --- Elvis Died!
AUG 21 --- National Senior Citizens Day
AUG 25 --- National Comic Book Day
AUG 25 --- National Daughter Day
AUG 28 --- National Son Day
SEP 3-7 --- OTR - Cancelled
SEP 7 --- LABOR DAY
SEP 9 --- TSG Meeting – 7pm
SEP 11 --- Remembrance Day (9/11)
SEP 12 --- Chocolate Milkshake Day
SEP 13 --- Grand Parents Day
SEP 20 --- Wife Appreciation Day
SEP 21 --- Miniature Gulf Day
SEP 22 --- AUTUMN EQUINOX
SEP 22 --- National Ice Cream Cone Day
SEP 25 --- National Comic Book Day
SEP 25 --- National Daughter Day
SEP 28 --- National Son Day
SEP 28 --- National Super Hero Day
OCT 12 --- Columbus Day
OCT 14 --- TSG Meeting – 7pm
OCT 17 --- Bridge Day
OCT 30 --- Devil's Night
OCT 31 --- Halloween
NOV 1 --- Day of the Dead
NOV 1 --- DAYLIGHT SAVING TIME ENDS
NOV 3 --- Election Day
NOV 11 --- Veterans Day
NOV 11 --- TSG Meeting – 7pm
NOV 16 --- Sadie Hawkins Day
NOV 21 --- World Hello Day
NOV 26 --- THANKSGIVING DAY
NOV 27 --- Day After Thanksgiving
DEC 4 --- National Cookie Day
DEC 9 --- TSG Meeting 7pm
DEC 12 --- Annual TSG Christmas Celebration – 6pm
DEC 21 --- WINTER SOLSTICE

DEC 22 --- National Short Person Day
DEC 24 --- Christmas Eve
DEC 24 --- National Chocolate Day
DEC 25 --- CHRISTMAS DAY
DEC 30 --- National Bacon Day
DEC 30 --- Annual NSS Bat Ball
DEC 31 --- New Year's Eve

CAVE BUCKS

CAVE BUCKS is a voluntary donation for cave purchases. The money is collected at each monthly meeting and sent to the Conservancy of choice. The money **SHOULD NEVER** be kept past the week it is collected.

Month of JUL ----- **\$00.00**

TOTAL TO DATE: ----- **\$7505.80**

GREAT JOB EVERYONE! Let's continue the giving! (No Cave Bucks for July. We held meeting On-Line).

The last money was sent to MAKC.
Keep It Coming!

WEBSITE & CAVING LINKS

Tri State Grotto ----- www.tristategrotto.net/
VAR ----- <http://var.caves.org/index.php>
NSS ----- www.caves.org/
NSS Convention 2020 ----- <https://nss2020.caves.org/>
NSS Convention 2021 ----- <http://nss2021.caves.org/>
OTR ----- www.otr.org/
MAR ----- www.caves.org/region/mar/
WVCC ----- www.wvcc.net/
Bob's Web Site ----- www.tristategrotto.net/Bob/
Rock Climbing Knots Friction -----
www.chockstone.org/TechTips/prusik.htm#Bachman/

DEAD DOG DISPATCH

V.#35

I.#8

AUG

2020

#85

Tri-State Grotto MySpace -----
www.myspace.com/tristategrotto/
Animated Knots by Grog-www.animatedknots.com/
Crystal Grottoes Caverns
www.crystalgrottoescaverns.com
Silers Cave -----
<https://www.karst.org/index.php/category/preserves/silers-cave-preserve/>



AUGUST BIRTHDAYS

Jerry Bowen, John DiCarlo, Julie Garvin, Carol Jackson, Shannon Miranda, Lauren Myers, Joe (JJ) Pate, Jordan Walthers,

Happy Birthday!



TSG Meeting, July 8, 2020

John called the meeting to order at 7 pm. The meeting was again held online because of the pandemic.

Elysia read the treasurer's report and it was approved.

Bob read the minutes and they were approved.

Old Business

OTR is cancelled.

Tri-State Grotto picnic is cancelled.

No further progress on setting up Facebook Pay on the website.

New Business

Don Arrowood spoke about several caves. He met the lady who bought the house over Baker Caverns in PA. She said she knows there is a cave under the house and that is the reason she bought it. He gave her a map of the cave, a copy of the marriage license of the first people to get married in the cave on August 23, 1933, and information about the NSS, grottoes, caves, and websites. He told her he would like to resurvey the cave and open up sections that were closed off when it was commercialized. Don said there are 3 gating projects. Todd, owner of Fantasy Cave in Huntington County PA, is anxious to have it gated and have visitors come.

Bob reported that there is probably a virus on the grotto website and might not be able to go back up. We will probably have to start over on a new server.

Still have not heard anything back from the state about a tax ID for the non-profit status.

Tom reported that the survey at Sarah Furnace Cave netted 800 feet of passage.

The meeting was adjourned at 8:00 PM, and several people stayed online after to visit.

Respectfully Submitted,
Lynn DiCarlo



Sarah Furnace Trip Report

July 18-19, 2020

Bert Ashbrook

We came sooooooooooooo close! Our July 18-19 meeting of Team Sarah was a grand success in almost every way—we were safe, everyone had fun, and we got a lot of work done. The only disappointment was that we wound up a few feet short of our goal of reaching two miles of survey in Sarah.

On Saturday morning, most of us met at the Plaza Pantry in East Brady, where the town was setting up for Riverfest (even though most of the festival had officially been cancelled, except for the fireworks). We went over the rules for cave surveying during the pandemic, as well as taking everyone's temperature. It was On the drive to the cave, we noticed that the developer who sold the Barbara Schomer Preserve property to the Mid-Atlantic Karst Conservancy, Jim Kapp, has now put in a new gravel road servicing the five riverside lots he intends to subdivide. "Incline Street" leaves the unpaved Sarah Furnace Road about 1/3 the way up the hill from Sarah Furnace village and descends west-southwestward to the flood plain along the Allegheny River. Incline Street crosses a series of old concrete piers through the woods, which presumably mark the location of an old inclined plane servicing the coal mines above. The inclined plane is shown on a 1928 blueprint of the mine (revised 1950).

One survey team entered the cave about 11:30. Chris Hill, Red Schock, Tom Griffin, and Bert Ashbrook formed the BKA survey and went to survey the southeast maze. Vickie and Trevor Cicchinelli formed a tiny tight team to survey at the eastern end of the Porcupine Slut Maze. Tom Metzgar and Dwight Kempf stayed on the surface to meet Alec Matheus, Shirley Wu, and Derek Von Neida from Nittany Grotto, who were arriving late. Dwight went over the pandemic rules with them and took their temperatures before sending them off to mark a route from the northern end of the Haulway along a joint north-northeast, then along a joint headed west, finishing at the mined northern end of the Porcupine Room. With MAKC's permission, they hung pink flagging tape marked "ESCAPE ROUTE" from the ceiling every 6 feet or so, to give survey teams and cavers in the Porcupine Slut Maze help in finding the way out.

All the teams came out of the cave for lunch, and we switched things up for the afternoon. Tom, who had been shadow-sketching in the morning, now became Team Sarah's newest sketcher, keeping book for the BKC team with Red and Chris. Bert went to the southwest portion of the cave with Alec, Shirley, and Derek, comprising the

BKD team. Derek was brave enough to crawl under some rather scary looking mine ceiling and check out a lead near station ASA9a where a few more seasoned surveyors had been unwilling to go. Then the four then surveyed a loop at the extreme southwest portion of the cave.

Meanwhile, back on the surface, Tom and Dwight began remediating the acid mine drainage along the trail leading to the cave, using both some crushed limestone that Tom had delivered to the site, as well as some large rocks they collected with Tom's truck. The former acid mine drainage pond is now completely transformed, with a swale to channel the drainage through the limestone as well as stabilized sides where we used to have to trudge through mud and slippery fire clay to reach the cave. They also worked on the new trail to the cave, which when complete will cross above the entrance and switch back to approach the cave from the opposite side we use now.

Everyone exited by the planned time of 6:00 p.m. Bert, Alec, Shirley, and Derek had planned to camp at the preserve (with MAKC's permission), but when Red and Tom mentioned the rental rates at the Motel 6 in Clarion, everyone got motel room instead. After dinner, the former campers drove back to the top of the plateau a mile or two north of the cave to view Comet Neowise. As the skies darkened, we were pleasantly surprised to have a perfect view of the Riverfest fireworks a couple miles south in East Brady. This is the second month in a row that the locals have celebrated our survey efforts with fireworks. But the comet and the stars of the Milky Way were more spectacular than any manmade show.

Our number dropped from eleven to seven for Sunday. Alec superseded Tom as our newest sketcher, as he and Shirley and Derek laid out the BLB survey in the northernmost part of the Porcupine Slut Maze. They reported that the route markers placed the day before were very helpful. Bert, Chris, Red, and Tom formed the BLA survey and worked in the southernmost surveyed part of the cave near the BKA and BKC surveys from the day before. We wound up about 3:00 p.m.

Altogether, we surveyed 687 feet for the weekend (643 feet of new cave) for the weekend. We also accomplished marking of a major route through much of the maze, as well as wonderful work on the acid mine drainage and a new trail to the cave. Sarah now has 10,488 feet (1.99 miles) surveyed, only 72 feet short of our second mile. Although we all know that Sarah is the longest cave in the Commonwealth, she is still the fourth longest surveyed cave, within 750 feet of overtaking Alexander Caverns. Nationally, she stands as the 553d longest surveyed cave, according to Bob Gulden's list (www.caverbob.com).

Return to the Lost Passage – Scott Hollow

Return to the lost passage, me & Mystik Miller. What better way to celebrate my first trip in my 50s than a 9 hr trip way back in Scott Hollow. Mystik met about 9 at the cave. We were both excited to be doing a long trip in a remote part of the cave. We went in at ten and we were in the north south by 10:30. Our plan was to show Mystik more of the cave and do some work on the Lost Passage dig. It's a long hard way to get to the end of north south. It always amazes me how the further you get the bigger the passage becomes. Mystik was blown away to say the least.

It took us about 3 1/2 hrs to get to the passage that leads to the dig. We dropped down into the Lost Passage and 5 mins later we had arrived at our destination. I didn't remember it being so snug! Mystik jumped into digging and I raked up the debris "with hands" that is. I didn't realize we had been digging an hour. By the way a license plate makes an awesome digging tool! We went thru ideas on how to proceed on, and a scissor jack would be the tool of choice. Well I use to carry a Hilti drill in here so why not a lift. We packed up and checked a cross section approximately named the Milky Way which took us back the way we came in. We checked out

high passage and moved slow on the way out down North South Passage. At the junction room it was all uphill from there. We made it out at 7 to a nice evening and planned on future trips. Great trip with a great partner!

Billy Gibberson



Mystik Miller in the Lost Passage in Scott Hollow Cave
(Photo by Billy Gibberson)

Hogbin Duo "TAG" Teams Southern Classics

After weeks of planning and obtaining proper landowner permits, Shawn and Clint Hogbin found time in their busy lives to travel to TAG country to once again enjoy some father/son cave time. Lots of efforts were made to be safe both inside and outside the cave. There were plenty of disinfectant wipes and other cleaning efforts made throughout the trip while visits inside stores were limited as little as practical.

On July 22, we started a 10-hour night-time drive from Hedgesville to South Pittsburg, Tennessee. We spent the next day (July 23) finding and then dropping the 57-foot entrance pit into Signal Light Pit. The cave was a great relief to the high humidity and 90+ degree temperatures outside. The relief offered by the cave from the outside weather was a theme for the entire trip. This cave is located in woods up the side of a small ridge near railroad tracks. The cave featured several hundred feet of easy cave passage and lots of nice formations beyond the entrance pit. We also spent some time looking for the signatures of civil war era soldiers, but we were not able to locate them. This was a great “warm up” cave for drops to come over the next few days. It also was the cave where we discovered the GPS device had a corroded battery terminal and needed immediate replacement.



Shawn Ascending Signal Light Pit

July 23 brought us the real deal. With a new Garmin in hand, on the agenda was two TAG cave classics. The 156-foot entrance pit at South Pittsburg Pit and the 183-foot entrance drop into Cagle's Chasm was our goals for the day. Surprisingly, South Pittsburg Pit is located in the City of South Pittsburg in Marion County, Tennessee. The cave is located in a wooded preserve up the side of a ridge. The cave is a beautiful open-air entrance pit with more than

2,200 feet of surveyed passage that has been a popular destination for visitors since its exploration by Chattanooga Grotto in 1964. At the bottom, we found a dead, partially decomposed rattlesnake. We also found a nice flowstone formation with a sizable pool of water. There was no caving on the agenda for us beyond the bottom of the entrance pit as we wanted to reserve time for Cagle's Chasm.



Clint Rappelling into South Pittsburg Pit

Cagle's Chasm would be a record-setting drop for Clint- whose prior deepest pit was in Cass Cave a few decades prior. Cagle's Chasm is a popular pit in Marion County, Tennessee. The main entrance hole is a large sinkhole about 15 feet wide and 20 feet long and the room at the bottom is about 50 feet in diameter. However, there are two other entrance pits to the same cave.



Clint Ascending Cagles Chasm

The other entrances are a series of shorter drops mixed with crawlways. As was the case in nearly all

drops for the trip, Shawn was the person to rig the ropes, first to rappel into the cave and the last to ascend out. This cave is also located in a wooded area, well up a mountain where we enjoyed the cries of nearby coyotes. Once completed, Shawn rigged another entrance drop to the cave a bit further up the mountain and proceed to drop about 50 feet into another part of the same cave.



Clint Ascending Cagles Chasm

On the agenda for July 24 was the 162-foot entrance drop in Neversink and the 137-foot entrance drop at War Eagle Cave. Neversink is also located in a wooded ridge at the end of a well-marked one-mile path up a ridge. The ridge is surrounded by lots of beautiful farms. The Southeastern Cave Conservancy (SCCi) owns the sinkhole. Undoubtedly, one of the South's most incredible natural features in this massive limestone sinkhole that drops into the Earth. As far as we could tell,

there is no caving at Neversink, as it's just a pit. But, the pit is complete with a waterfall that flows from the top all the way to the bottom. The pit is unique in that you rig the rope well below the cusp of the top of the pit. There is a pathway that drops you about 20 feet below the top of the pit where you rig into two bolted anchors. On the opposite side of the pit is the waterfall, so while we were dry during the rope work, we were able to enjoy various views of rainbows while rappelling and ascending. Once again, at the bottom, we found a dead, partially decomposed rattlesnake, lots of frogs, and more nice views of the waterfall.



Clint Ascending Neversink

War Eagle Cave is also located in a wooded area up a mountain. The entrance area is distinctive as it's a small sink with a rock formation similar to a column that quickly leads to a portal in the cave wall. The rope is anchored both outside and inside the window portal. Once thru the portal, you're standing on a 3-foot wide ledge with an immediate 137-foot drop into the cave. At the bottom is some of the most enjoyable caving passages imaginable. We followed a large trunk passage for about $\frac{3}{4}$ of a mile up a stream. The passage would vary but was often 50 feet wide and 25 feet tall. The trunk passage offered so many routes that you never really needed to enter the stream. The stream itself could be 4-10 feet wide in places and vary from inches to a few feet deep. There were unbelievably beautiful formations along the route, undoubtedly preserved by the difficult entrance. We also saw a 10 -12-inch fish in one of the stream pools. The fish was probably a catfish. This was some of the most

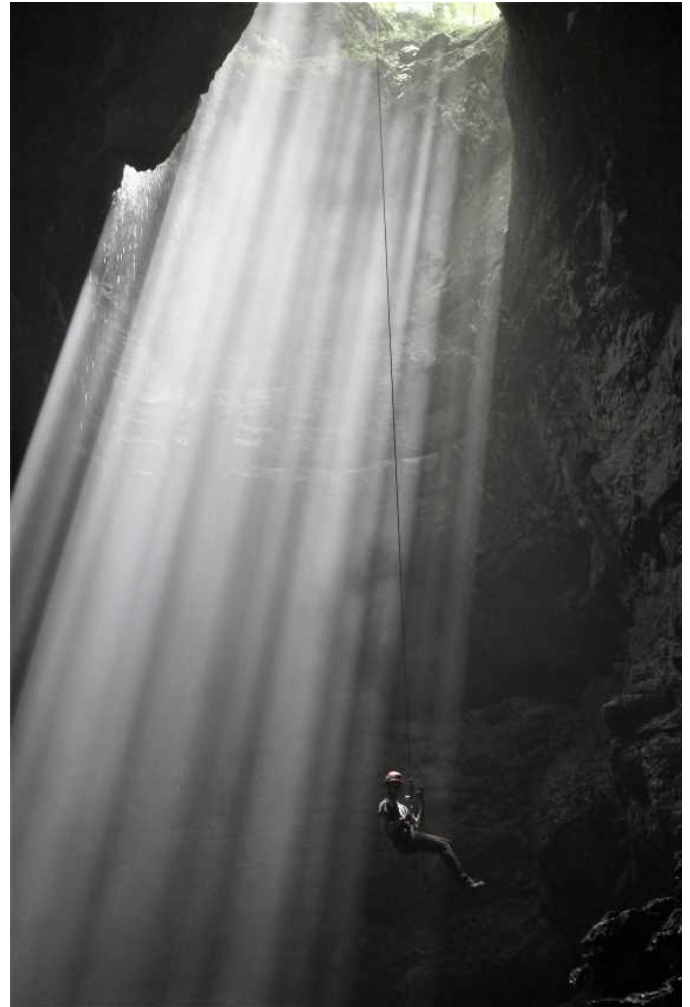
enjoyable caving that we've experienced. For Clint, the ascent was difficult as the rope walking system that holds you close to the rope proved especially difficult at the top where a nearby ribbon formation on the wall offered lots of opportunities for the gear to snag. Nonetheless, this remained the best experience for cave passages of the trip.



Shawn Rigging War Eagle

The final day of July 25 brought to us the 142-foot entrance drop at Stephen's Gap Cave with a finale at the 227-foot drop at Greens Well. Stephens Gap is one of the most beloved pits in the South. It offers a beautiful pit complete with small waterfalls and a walk-out exit. Stephens Gap is located on private property and requires permit access through the Southeastern Cave Conservancy. Seemingly, like all TAG caves, it is located in a wooded area up a one-mile path. There is no caving at Stephen's Gap. But, we both enjoyed the rappel into the sun rays until landing on the famed rock pedestal. Neither of us opted for the ascent as it seemed

practical to save our energy for whatever lies ahead at Greens Well.



Shawn Rappelling Stephens Gap

Not to be outdone, Green's Well was also located in a wooded area up a steep hike up a mountain. Neither Shawn nor I had been to this cave previously and locating the entrance required some effort. Shawn was the first to descend, offering information of two waterfalls entering from the far wall, was sure to make a wet trip in/out of the pit. This will be a special trip for Shawn as it marked the 400th time he has entered a cave. This was a special drop for Clint as this was his personal highest drop. Once at the bottom, we started down the cave following the stream passage. But, not very far into the cave, we found lots of opportunities to get wetter. That was a notion that we had little interest. As we spent some time exploring the area at the bottom of the pit, we began to wonder if the

volume of water was increasing. The weather forecast did not show a high chance of rain, but there is always some doubt as it was after all summertime in the South. Convinced the water volume was increasing, Clint started up the rope and would complete the ascent in 14 minutes and 56 seconds. That was a respectable time for the 227-foot ascent in water for a 56-year-old. As he was traveling up through the water, it was clear to him there was no increase in water volume. Once outside, Clint informed Shawn there was no rain. It was simply another hot sunny day just like it was when we entered. Using the Frog system, Shawn had completed the ascent in a short 8 minutes and 46 seconds, while declaring the pit his favorite of the trip.



Shawn in Greens Well

With our caving activities completed, we started on the trip home arriving back in Hedgesville in the middle of the night. (All photos by Shawn & Clint Hogbin)

Clint & Shawn Hogbin



May 16, 2020

Great Savannah Cave System — Lightner's Entrance to McClung Cave, Greenbrier County, WV.

Nikki Fox did a survey trip with Dave Smallwood and Dave Socky to kill leads near the Champaign Connection Crawl. Did the BAA (Back At it Again) survey with 34 stations and 609 feet. New-to-the-cave data was 352.2 feet surveyed.

May 30, 2020

Great Savannah Cave System — Lightner's Entrance to McClung Cave, Greenbrier County, WV.

Nikki Fox did a survey trip with Carl Amundson and Brian Sakofsky. Had the MMP Survey with 20 stations and 396 feet. Did a tie-in loop in the lower level at 3rd Breakdown that included the Beachfront Breakroom.

June 5-7, 2020

Great Savannah Cave System — Maxwellton Sink Cave, Greenbrier County, WV.

Nikki Fox did a camp survey trip with Nick Socky and Dave Socky. Had two surveys: 1) WAF — where we set and rigged bolts for a drop down a 10-foot waterfall and found the Tilted Tunnel where we stopped due to the vertical nature of the aggressive downward sloping passage and 2) FIN — following downstream Covert Creek into the cascading falls area. Named it Gremlin Falls due to all of the issues we had (breaking a bit, a warn-out bit, dropping the wrench, etc.) — with a total of 469.8 feet and 28 stations.

June 6, 2020

MeMiner Cave, Hampshire Co, WV
Beau Ouimette, Tom Griffin, & Red Schock – Dug on another passage & this time opened it up. Added about 50 to 70 ft of passage to the cave

June 11, 2020

Windy Mouth Cave, Greenbrier County, WV.
Nikki Fox did a survey trip with Nick Socky and Alex Faunce to survey leads off of the JP survey. Had the JPB (Jonny Prouty Booty) survey with 24 stations and 312.4 feet. Dug and opened up a small constricted tube and found virgin passage.

June 25, 2020

Tolly's Secret Cave, Pocahontas County, WV.
Nikki Fox did a survey trip with Greg Springer and Hunter Campbell. Surveyed the entire cave with 33 stations and 663.5 total feet. Looks to be the longest sandstone cave in the U.S.

July 4, 2020

Friars Hole Cave — Southern Entrance,
Pocahontas County, WV.

Nikki Fox did a survey Trip with Hunter Campbell to re-rig the Coon Dick Dome and clear giant boulders above the Temple of Boom. At the bottom of the 25-foot rappel, we found a new way into Lou's Passage that bypasses an awful stream belly crawl.

July 10, 2020

Stove Cave, Greenbrier County, WV.

Nikki Fox did a survey rip with Hunter Campbell, "Mountain" Dave Knox and Hannah Bortel (a geology grad student) to perma-rig the 57-foot drop into the Travertine Dog Room, which had old 1-inch hand drives. Nikki took Hannah to a passage above a 20-foot waterfall to measure scallops for her data collection. Took photos too.

July 11, 2020

B*A*S*H Cave, Greenbrier County, WV.

Nikki Fox did a survey trip with Hunter Campbell, "Mountain" Dave Knox and Dave Socky. We surveyed virgin canyon passage off of Fajita Hall with 33 stations and 490.3 feet. Found an old entrance that was blasted shut, with 1-inch drill holes in rocks, old rusty farm equipment, very warm air and salamanders. Left a going lead in an upper phreatic passage.

July 18, 2020

Glade Cave, Augusta Co, VA

Doc Phillips, Ashby & Adam Haines – Explored almost all of the cave, very muddy in spots.

July 17-19, 2020

Great Savannah Cave System — Maxwellton Sink Cave, Greenbrier County, WV.

Nikki Fox did a camp survey trip with Nick Socky, Dave Socky, Dave Smallwood and Silas Springer. Had two survey teams and we accomplished: final bolting and rigging to survey of the rest of Gremlin Fall, a flowstone bolt climb to The Day Spa, bolting and rigging to finish the Tilted Tunnel and then surveyed up to the 60-foot waterfall where upstream Covert Creek falls down from above The Retreat. Nikki's team had the NUS with a total of 421 feet and 20 stations.

July 18-19, 2020

Sarah Furnace Cave, Clarion Co, PA

Chris Hill, Red Schock, Tom Griffin, Bert Ashbrook, Vickie and Trevor Cicchinelli, Tom Metzgar and Dwight Kempf, and Alec Matheus, Shirley Wu, and Derek Von Neida from Nittany Grotto – Group split into 3 teams and surveyed 687 ft of passage (643 ft was new cave). Sarah now has 10,448 ft (1.99 mi) of passage. We fell 72 ft short of 2 miles! Right now she is 4th on the list of long caves in PA.

July 20, 2020

Racoon Den Cave, Washington Co, MD

Ashby Haines – Dug open new small muddy cave. Named it Racoon Den Cave.

July 25, 2020

Carols Crack Cave, Hardy Co, WV

Gary & Elysia Mathias, Tom Griffin, & Red Schock – Elysia, Gary, & Tom went thru the sump. Gary & Elysia explored the formation area & took photos.

July 25, 2020

Yates Entrance to Ludington Cave, Greenbrier County, WV.

Nikki Fox did a recon trip with Nick Socky, Dave Smallwood and Alex Faunce to rig the Old Drop and the 12-foot waterfall. Found our way to the lead where the McClung connection should be. The air was in the right direction (blowing into our face). We dug for about 15 feet until Alex got wet and then left.

July 29, 2020

Huntin' Club Cave, Randolph County, WV.

Nikki Fox did a surface dig with Hunter Campbell and Kyle Mills. After persuasion, we broke through lots of rocks and into this new cave.

Aug. 1, 2020

Great Savannah Cave System — McClung Cave Historic Entrance, Greenbrier County, WV.

Nikki Fox did a survey trip of passage going towards the Ludington connection from the Liberty Bell Junction. Participants: Nick Socky, Alex Faunce, Dave Smallwood, Dave Socky, Bob Alderson, Aaron Clair, Eric Steinberg and Chad Casella. Three teams established to survey. Nikki, Nick and Alex had the ROB Survey with 787.1 feet in 28 stations. Between the 3 teams we got 3,007.3 feet.

DEAD DOG DISPATCH

V.#35

I.#8

AUG

2020

#93

Aug 2, 2020

Thorny Bottom area, Hardy Co, WV

Had four diggers for day including Jeff, Kurt, Ryan, and a new member Angela who is a recent graduate from Georgia Tech and got a job in Martinsburg and now lives in Winchester, VA area. We decided to focus on the historic Thistle Ass entrance. Here the work slowed due to the lack of working area. We also worked a bit on the potential new entrance to Thistle Ass and made some good progress there too. Not sure it's necessary now but might be good to see if it goes.

Aug. 4, 2020

Huntin' Club Cave, Randolph County, WV.

Nikki Fox did a survey Survey trip with Hunter Campbell from the entrance with the IDM Survey with 274.9 feet and 19 stations. Found a 14-foot pit and assume the passage from the massive amount of air.

Aug. 8, 2020

Dry Cave, Greenbrier County, WV.

Nikki Fox did a survey Survey trip with Nick Socky and Eric Steinberg. Second team was — Greg Springer, Dave Socky and Mountain Dave Knox. Third team was — Joe Calderone and Rebecca Stewart. Nikki's team had the DJA (Demon, Jesus, Alien) Survey with 550.5 feet and 31 stations. We surveyed a complex area, with multiple levels, in the upper area north of The Better End. Found a pit/dome that needs bolt climbed and cave pearls.

Aug 8, 2020

Baker Quarry, Hardy Co, WV

Tom Griffin, Elysia & Gary Mathias, Red Schock, & Bob & Paulette Bennett – Went to Baker Quarry to do a repair on the gate and replace the lock.

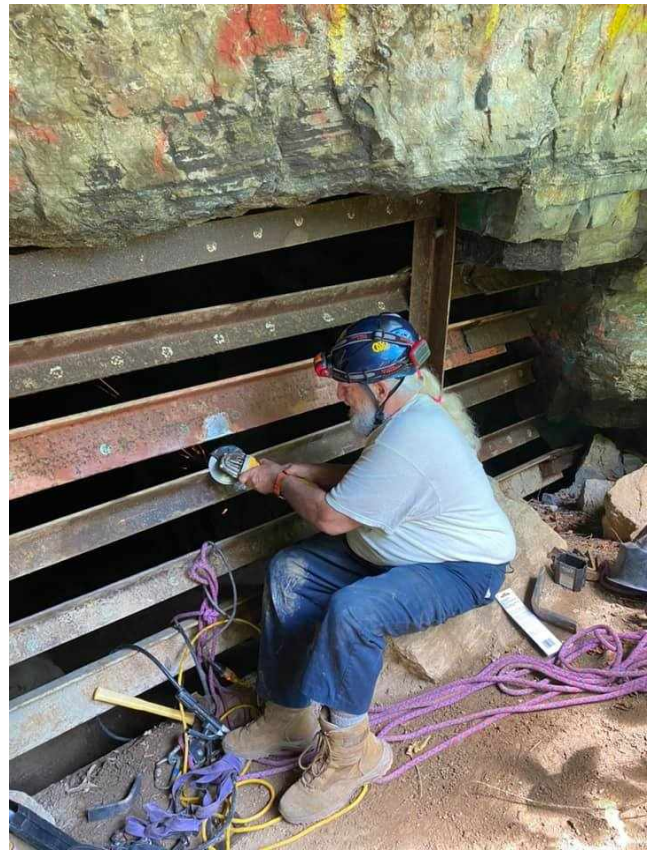
Aug 8, 2020

Scott Hollow Cave, Monroe Co, WV

Billy Gibberson & Mystik Miller – Went back to the Lost Passage to dig. 9 hr trip. A license plate makes a great digging tool.

Aug 9, 2020

Howell Cave, Washington Co, MD – Adam & Ashby Haines went to Howell Cave. The entrance is dry, so it was nice to get into the cave before wet weather closes the entrance again. Lots of nice formations



Bob Grinding at Baker Quarry (by Tom Griffin)



Lots of Poison Ivy at Baker! (BB)



CAVIN CALENDAR

AUGUST 9TH - SEPTEMBER 19TH



Sunday	Monday	Tuesday	Wednesday	Thursday	Friday	Saturday
Aug 9	Aug 10	Aug 11 National Son & Daughter Day	Aug 12  Meeting 7pm VIRTUAL National Middle Child Day	Aug 13 Left Handers Day	Aug 14	Aug 15
Aug 16 Elvis Died	Aug 17	Aug 18	Aug 19	Aug 20	Aug 21 National Senior Citizens Day	Aug 22
Aug 23	Aug 24	Aug 25 National Comic Book Day National Daughter Day	Aug 26	Aug 27	Aug 28 National Son Day National Super Hero Day	Aug 29
Aug 30	Aug 31	Sep 1	Sep 2	Sep 3 OTR - Cancelled	Sep 4 OTR - Cancelled	Sep 5 OTR - Cancelled
Sep 6 OTR - Cancelled	Sep 7 OTR - Cancelled LABOR DAY	Sep 8	Sep 9  Meeting 7pm	Sep 10	Sep 11 Remembrance Day	Sep 12
Sep 13 Grand Parents Day	Sep 14	Sep 15	Sep 16	Sep 17	Sep 18	Sep 19

DEAD DOG DISPATCH



Mountain Dave Rappelling in Stove Cave (Photo by Nikki Fox)

DEAD DOG DISPATCH

TRI-STATE GROTTO OF THE NSS
BOB BENNETT, BOB BENNETT, EDITOR
464 HUCKLEBERRY DR
GERRARDSTOWN, WV 25420-0344
304-671-0344
gimpycaver@comcast.net



TO:



DEAD DOG DISPATCH

V.#35

I.#8

AUG

2020

#96