

DEAR DOG DISPATCH TRI-STATE GROTTO



40' PIT, JEFFERSON CO, WV

VOL. #33

ISS. #7

JUL

2018

#75

The **DEAD DOG DISPATCH** is a publication of the **TRI-STATE GROTTTO** of the NSS. The OPINIONS expressed herein are not necessarily those of the EDITOR, the GROTTTO, nor the NSS. Material that is unsigned may be attributed to the EDITOR. Material contained within this PUBLICATION may be reproduced by the NSS and its GROTTOS, provided that PROPER CREDIT is given to the **DEAD DOG DISPATCH** and the AUTHOR.

The **DEAD DOG DISPATCH** is a NON-PROFIT monthly newsletter published by the **TRI-STATE GROTTTO of the NSS**. SUBSCRIPTION RATES are \$12.00 per year to SUBSCRIBING MEMBERS, and **FREE** with FULL and ASSOCIATE MEMBERSHIPS to the **TRI-STATE GROTTTO**.

TRI-STATE GROTTTO OFFICERS

CHAIR - John DiCarlo - 301-432-2323
j.dicarlo@myactv.net

V-CHAIR - Bob Bennett - 304-671-0344
gimpycaver@comcast.net

TREASURER- Jerry Bowen - 301-790-0476
bookmaker-jb@myactv.net

SECRETARY - Paulette Bennett - 304-671-8317
kywoman15@comcast.net

Member At Large - Tom Griffin - 240-676-3184
A1TopCatDesign@gmail.com

Conservation Chair - Mason Griffin - 240-268-2593
tmgriffin@mix.wvu.edu

Equipment Chair - Doc Phillips - 703-583-0390
thosearemagicbeans@gmail.com

Membership Chair - Bob Bennett -304-671-0344
Newsletter Editor --- Bob Bennett ----304-671-0344
Funding - Paulette Bennett -304-671-8317

P R Chair -----
Safety Chair -----
Program Dir -----
Youth Chair -----

TRI-STATE GROTTTO MEMBERSHIP DUES ARE AS FOLLOWS:

FULL MEMBERSHIP ----- \$10.00 (Must be NSS)
ASSOCIATE MEMBERSHIP --- \$12.00 (Non-NSS)
SUBSCRIBING MEMBERSHIP - \$12.00 (Non-Voting)
FAMILY MEMBERSHIP ----- \$2.00/FAMILY
LIFETIME MEMBERSHIP ---- \$200.00 (Must be NSS)
SUSTAINING MEMBERSHIP ---- \$50/YEAR
(SUSTAINING- \$50/yr until \$200 total is met)
(FULL FAMILY- must be NSS)(Voting rights if over 16)
(FAMILY ASSOCIATE- non NSS)(Voting over 16)

Payment of DUES can be made at MONTHLY MEETINGS
or can be SENT TO:

JERRY BOWEN, TREASURER
TRI-STATE GROTTTO of the NSS
17817 STONE VALLEY CR.
HAGERSTOWN, MD 21740
301-465-2651

E-MAIL: bookmaker-jb@myactv.net

For MEMBERSHIP INFORMATION contact:

BOB BENNETT, MEMBERSHIP CHAIR
TRI-STATE GROTTTO of the NSS
464 HUCKLEBERRY DR.
GERRARDSTOWN, WV 25420-0211
304-821-4621
E-MAIL: gimpycaver@comcast.net

**** The photo on this month's cover was taken about 35 years ago of Bob Bennett & Chuck Stanley preparing to drop one of the deepest pits in Jefferson Co, WV. The photo was probably taken by Crazy Ted Whacter using Bob's camera.**

****** Don't forget, the JONES QUARRY BOOKLET is ALMOST GONE! There are 10 left! If you are interested in purchasing a copy of the BOOKLET, contact **BOB BENNETT 304-821-4621(H)** or **304-671-0344(C)** E-MAIL at gimpycaver@comcast.net**
The copy will cost \$6.00 each plus the cost of shipping!

*******10 LEFT!*******

WE NEED EVERYONE TO KEEP THINKING ABOUT VOLUNTEERING FOR AN OPEN POSITION. WE STILL HAVE 4 POSITIONS OPEN! PLEASE GIVE IT SOME THOUGHT. WE NEED YOUR SUPPORT!



DEAD DOG DISPATCH

V.#33

I.#7

JUL

2018

#76

CAVE EVENTS

DEC 31 --- NEW YEAR'S EVE

2018

***** CAVE BUCKS *****

CAVE BUCKS is a voluntary donation for cave purchases. The money is collected at each monthly meeting and sent to the Conservancy of choice. The money **SHOULD NEVER** be kept past the week it is collected.

Month of JUNE ----- **\$20.00**

TOTAL TO DATE: ----- \$6920.52

**The money was sent to SCCI.
Keep It Coming!**



WEBSITE & CAVING LINKS

Tri-State Grotto ----- www.tristategrotto.net/
VAR ----- www.varegion.org/
NSS ----- www.caves.org/
NSS Convention 2017 ----- <http://nss2017.caves.org/>
OTR ----- www.otr.org/
MAR ----- www.caves.org/region/mar/
WVCC ----- www.wvcc.net/
Bob's Web Site ----- www.tristategrotto.net/Bob/
Jerry's Cave Web Site ----- <http://www.caves.org/member/jerry/>
Bob Gulden ----- www.caverbob.com/home.htm/
Rock Climbing Knots Friction ----- www.chockstone.org/TechTips/prusik.htm#Bachman/
Tri-State Grotto MySpace ----- www.myspace.com/tristategrotto/
Animated Knots by Grog ----- www.animatedknots.com/
WV Caver ----- <http://wvcaver.speleo.us>
WNS ----- <http://www.caves.org/WNS/WNS%20Info.htm/>

JUL 4 --- INDEPENDENCE DAY

JUL 6 --- Ridgewalk, Shenandoah Co, VA

JUL 8 --- JQ trip - 9:30 am

JUL 11 --- TSG meeting - 7pm

**JUL 14 --- Annual TSG Picnic - 12pm Noon -
C&O Canal Campground - see John**

JUL 14-15 --- WVACS Classic - see Dave Sockey

JUL 18 --- Vertical Session, James Rumsey - 6pm

JUL 21 --- Ridgewalk - 8:45 AM - see Bob

JUL 28 --- Harman Cave dig - see Tom or Bob

JUL 30-AUG 3 --- NSS Convention - Helena, MT

AUG 8 --- TSG meeting - 7pm

AUG 13 --- LEFT HANDER'S DAY

AUG 15 --- Vertical Session, James Rumsey - 6pm

AUG 25 --- Carols Crack - see Brent Jefferson

AUG 30-SEP 3 --- OTR

SEP 1 --- WVASS Fall meeting at 630p - Lutz
Rock, OTR

SEP 3 --- LABOR DAY

SEP 11 --- PATRIOT'S DAY

SEP 12 --- TSG meeting - 7pm

SEP 19 --- Vertical Session, James Rumsey - 6pm

SEP 28-30 --- Fall VAR

OCT 5-7 --- Fall TAG Cave-In - Westfork in Little
River, AL

OCT 8 --- Columbus Day

OCT 10 --- TSG meeting - 7pm - Auction

OCT 17 --- Vertical Session, James Rumsey - 6pm

OCT 20 --- Bridge Day

OCT 31 --- ALL HALLOWS EVE

(HALLOWEEN)

NOV 11 --- VETERAN'S DAY

NOV 14 --- TSG meeting - 7pm- Nominations

NOV 16 --- Sadie Hawkins Day

NOV 22 --- THANKSGIVING DAY

NOV 23 --- BLACK FRIDAY

DEC 12 --- TSG meeting - 7pm - Elections

**DEC 15 --- Annual TSG Christmas Party - 6pm
- Bedington Ruritan**

DEC 21 --- WINTER SOLSTICE

DEC 24 --- CHRISTMAS EVE

DEC 25 --- CHRISTMAS DAY

DEAD DOG DISPATCH

V.#33

I.#7

JUL

2018

#77

Containment Procedures -----
<http://www.fws.gov/northeast/whitenosemessage.html/>
Crystal Grottoes Caverns
www.crystalgrottoescaverns.com



MONTH OF JULY

Lynn DiCarlo, Scott Graham, Jason Hajenga, Gary Mathias, Nuch Songsasen, Janet Tinkham, Terri Ward

HAPPY BIRTHDAY



TSG Meeting 6/13/18

John called the meeting to order at 7:00 pm.

There were 14 in attendance.

Jerry gave the Treasurer's Report.

Correspondence: John had a Thank You card from Keith Hammersla for the help at Adam Stephen Day.

Old Business: Jones Quarry Cleanup – 9:00 am until 4:00 pm.

The TSG annual summer picnic will be July 14th at the Antietam Campground on the C&O Canal – 12 pm noon until 6 pm.

Fall VAR will be the last weekend in September.

New Business: The next Vertical Session will be on June 20 at James Rumsey – 6:00 pm until 8:30 pm.

Trips: Wed Night Caving at Dam #4 last month went very well.

Norman Cave was cancelled due to extreme wet weather.

The next Wed Night Caving will be at Lower Nestle Quarry & Indian River Caves – Meet at 6:00 pm – The Nestle Quarry trips were cancelled. The trip sent to Whittings Neck Cave instead!

Elysia & Nina went to Big Column Cave – Extremely muddy!

Corey Hackley has found many pits in western MD – One is over 100' deep.

Doc ridgewalked the New Market, VA area – Found several caves.

Cave Bucks: \$20.00 – Sent to SCCI.

John Adjourned the meeting at 8:30 pm.

Respectfully submitted

Paulette Bennett

Secretary, Tri-State Grotto of the NSS

Spring MAR Field Meet by Shawn Hogbin

After a personally enjoyable and successful VAR a few months ago, I decided it would be worth my while to try on a MAR for size. This MAR field meet was located at the Bear Cave Preserve, which is near the town of Derry, Pennsylvania. The passengers unfortunate enough to be stuck with me for this weekend were Edgar Villarreal, Coleman McHose, and Emily Neely. We arrived a little later than we all wanted to, but we still all had the ambition to go caving that evening. At first, we set our sights on Copperhead Cave, one of the longest

DEAD DOG DISPATCH

V.#33

I.#7

JUL

2018

#78

in Westmoreland County, but we were thwarted by my inability to remember to bring an essential piece of gear: a GPS. We decided on a closer target, Con Cave, which had clear and obvious access trails. Con Cave is an 800'+ cave, with the entrance inconspicuously placed in a quarry wall. The entrance was also home to a Woodrat that kindly minded his own business (this would not be the last encounter with a Woodrat for this weekend). The cave is mostly canyon passage, becoming impressively tall in many places. The cave is "V" shaped, with the bottom of the "V" being a large dome. After enjoying the cave for an hour our group exited the cave and appreciated the pleasant walk back to camp. We managed to somewhat spook ourselves by talking about how the nearby "Bear Cave" likely got its name because there were bears in the area.

Regardless, we survived the hike and the night. We made a quick run to Dean's Diner for breakfast. Dean's Diner is a 24-hour institution that I would recommend for tasty food that is affordable even for college cavers. After breakfast we had our sights set for Bolivar Track Cave, however this endeavor ultimately resulted in four twenty-somethings stumbling through Japanese Knotweed. A tactical retreat was agreed upon and we made our way back to camp. From here it was a short hike to the entrance of Bear Cave. Bear Cave is one of the few caves that is over a mile in Westmoreland County. It is a maze-like cave that has a nice stream that is present in about half of the passage. The entrance itself is a sink and is home to many

different holes that all let you access the cave. Since we were okay with getting a little lost and we wanted to see as much of the cave as possible, all members of the group took turns leading us through the maze. Once we got back to passage we recognized, or found our way out, it was time to switch leaders. We eventually found our way deeper into the cave; the passage changes from around 5' high to 25' high in some sections. It was in this deeper section of the cave that we found the registry room.

After relaxing in the registry room for a short while, we eventually decided we wanted to continue deeper into the cave, which resulted in us seeing more passage with high ceilings. Eventually we got to a point where we thought we had exhausted all of the deeper passage, except for one small, wet hole. I drew the short straw and crawled ahead. The tube was not as miserable as it appeared and there was worthwhile passage on the other side. I encouraged the others to come through, but they did not seem emboldened by what I had just done. Coleman eventually made his way through the hole. About this time, we encountered a group that had gone into the cave earlier that day. At this time, I ran into Eric Pelkey (trip leader and organizer of this MAR). After a short conversation with him I learned that the crawl we had just done was the most difficult way to get to the room we were sitting in. There was a spacious (and dry) scramble in a nearby passage that would have the same net result. The two remaining members of our group wisely took that passage. Sadly, the cave only has a

few hundred feet more of tight canyon passage after this, so we quickly exhausted the rest of the passage and made our return trip.

Once topside I asked the group if we could head to the other side of a nearby ridge and locate two other nearby caves. They foolishly agreed. These two other caves were not large, both around 100' long. Luckily the walk was very short. First was Hillside Bone Cave, which is a 100' tight canyon passage that ends in a small sump. It gets too tight to turn your head and I had to do some chest compressions to get to the end. Our group quickly moved on to Ken's Cave, which was the longer of the two. The old entrance to the cave is an obvious sink, but it was collapsed. The new entrance was a small hole, which was home to a Woodrat. Since I did not care to be the first in the hole with the Woodrat I convinced the bravest member of our group, Coleman, to go first (in full disclosure, he did not actually know the Woodrat was there). Coleman emerged about 20 minutes later, and I was the next victim. Ken's cave was not spacious, but once you squeeze through some tight passage you get into a 70' long passage with some nice formations. The cave is not easy to exit considering on your way out you realize that the gravity that was seriously aiding you in your efforts on the way in is now determined to keep you in the cave. Fortunately we all survived the cave and the hike back. This would be the last bit of caving we would do during MAR. After a positive experience at both a Spring VAR and MAR, it is time to see how the respective Fall events treat me.

DEAD DOG DISPATCH

V.#33

I.#7

JUL

2018

#80

Survey of Stone Cabbin (Calmes Neck) and Bathon Caves

By Bob Bennett with Input from Bob Edmonds

Input from Bob Edmonds, "I was contacted by a fellow Master Naturalist to take pictures of an eagle nest near her house. While there she mentioned this hole up on the side of a rock face facing the river where she used to play when a kid. We went to look at it and I was amazed that it was a cave there with a wooden ladder put up by the owner. I went back in with my cell phone flashlight and was amazed how far it went. I took some pictures. Then she told me about this sink hole and we went to look at it and I was again amazed by what looked like another cave! Then I contacted the owner, Stephen Bathon and got permission to explore and map. He told me 2 kids were digging on it trying to get by something. This really got my curiosity up. Very little limestone in the area except this one little area. Then I contacted you all to help me in exploring and mapping."

The whole interest in Calmes Neck Cave started when a woman who works with Bob Edmonds told him that there were eagles nesting in the Calmes Neck area of Clarke Co, VA. So, the two of them went there to actually film & take photos of eagles. While there knowing Bob was a caver she told him about a cave along the river. She then took him down to see the cave entrance. This cave is included in the VA Cave survey and is known as Calmes Neck Cave. There was a brand-new ladder built to be able to climb up to the entrance of the cave.

After a short exploration of the cave she then told him of another cave on the property and gave him the owner's name. Bob then contacted the owner about possibly exploring and surveying both caves. He told Bob that some kids had been digging in it to see where it was going. If anyone knows anything about Clarke Co, VA, then they are probably aware that Clarke Co is not known to have much limestone and that there are very few known caves in the county.

The owner had some old historical information about the cave along the river. The cave had been

known for 300 years and its position was on an old 300-year-old survey map for the area known as Calmes Neck where the Shenandoah River circles around a finger of land. Apparently, there is about 500 acres of property in the Calmes Neck area. Today there is a homeowner's association with a locked gate on the road leading into the neck. Bob then obtained permission to survey the caves as-long-as the owner would receive copies of the maps and descriptions of the caves, and the members of our survey team would sign a release form.

Bob then contacted me to see if we could get a couple of cavers to help survey & explore the caves. He said that the caves probably weren't very large and to tell everyone not to expect too much. After informing people of the project we ended up with the following group: Bob Edmonds, Earle Sutor, Terry McClanathan, Jerry Bowen, Tom Griffin and myself. Pretty large group considering the caves were probably going to be very small!

We all met up on Tue, May 8th and Bob Edmonds led the way to the cave. There was something somewhat unusual about this trip. First of all, it was on a Tuesday. Aren't people usually working on Tuesday? Well not for these guys. Without going into ages everyone on the trip was either retired or should be retired!

It was a perfect day for caving! Temps were around 80 degrees and it was mostly sunny. What better day to go underground! The area was near where the landowner was building a home. The nice part about it was that it was only about a 30-yard walk from where we parked to the cave entrance! As you looked around there wasn't much limestone appearing on the surface but here was a 30' round sinkhole with a roughly 2' by 2.5' entrance in the bottom of the sinkhole. Right away it looked promising!

As soon as Terry entered the cave the survey began. One by one we all entered the cave. I was the last to enter with Tom just in front of me. Of course, all of us started taking pictures. The passage was a narrow sinuous passage that was 8 to 12 feet high and 2 to 4 feet wide. Looking up you could see lots of leaves & debris lodged in the ceiling so apparently the

cave takes a lot of storm drainage and fills to the ceiling! The survey went smoothly. After about 40 to 50 feet the passage ends in a low pool of water. (One a side note it really would have been interesting to see the sinkhole & cave about 3 to 4 weeks ago. THAT WAS WHEN WE PROBABLY HAD 5-10 INCHES OF RAIN DEPENDING YOUR LOCATION & EVERYTHING WAS FLOODED &/OR GUTTERED FROM THE TREMENDOUS RUNOFF!

To the left there is a higher dry passage with a tacky mud floor that went approximately 20' before becoming a low crawlway. Here the passage turned left again. The passage ended in a low wide room with total of 95' of passage. There is a possibility that you may be able to dig here and uncover more passage. It was decided to name the cave Bathon Cave after the last name of the present-day owner per his request.

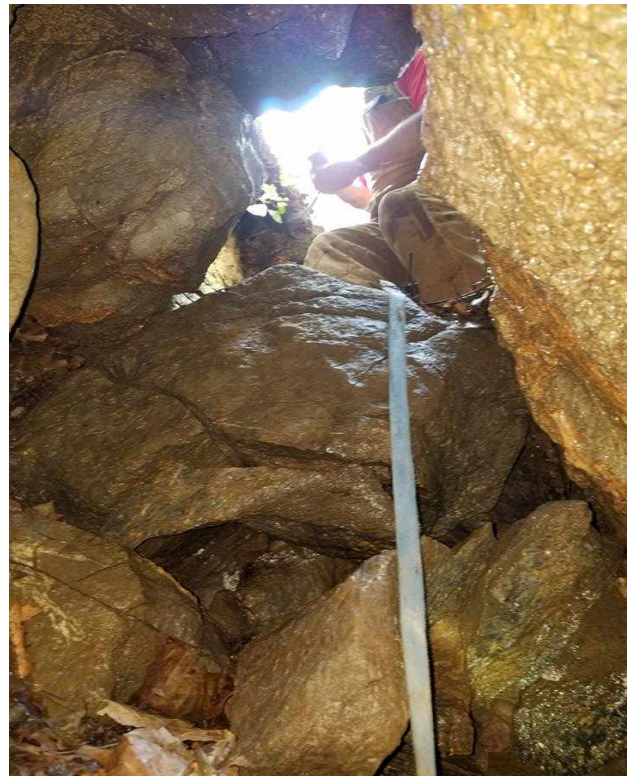
We then left the cave and ate a snack & drank some water. From here we headed to the 2nd cave on the property, Calmes Neck Cave. We had to go right by where the owner is building his home. In the process the owner has dug up several odd looking flat limestone blocks which he has placed strategically above the cliff over-looking the river. There is a steep trough leading down to the river at this point. We headed down and followed the cliff for approximately 200' to the entrance of the second cave.

The opening to the cave is approximately 15' up on the cliff. The owner had placed a brand new (hand built) ladder to be able to gain entrance to the cave. The survey started almost immediately. This cave was entirely different from Bathon. The passage was more spacious, the floor was flat, and was fairly dry! The cave would make a very nice shelter for someone who needed a place to get out of the weather. There were lots of cave crickets and a few small formations, mostly flowstone and bacon type formations.

The survey was completed in record time and we showed 68' pf passage. So, we all then took pictures and headed back to the vehicles. By the end of the

day we had added one new cave and surveyed a 2nd known cave for the Clarke Co survey!

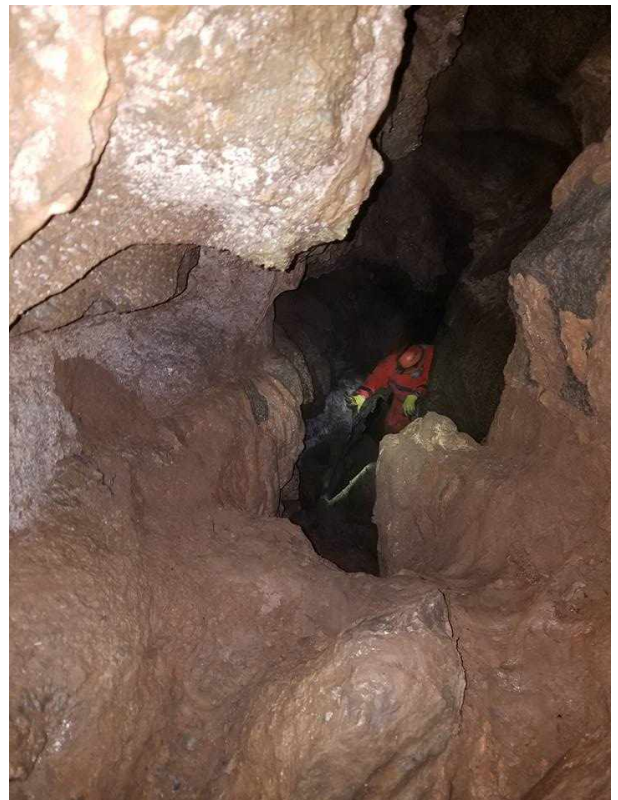
Terry was to do the cartography and forward the maps to me for the report. Then I was to send the maps & info to Mike Futrell for the VA Cave Survey! As we were waiting for the finished product we realized that the cave was known by a different name almost 300 years ago. It was known as Stone Cabbin Cave back then. It was decided that since this name was before the current name, the map should reference Stone Cabbin Cave instead of Calmes Neck Cave again per the request of the current landowner. So, there you have it! One new cave for the VA Cave Survey, Bathon Cave, and a 2nd cave with a 'new name', Stone Cabbin Cave (originally Calmes Neck Cave).



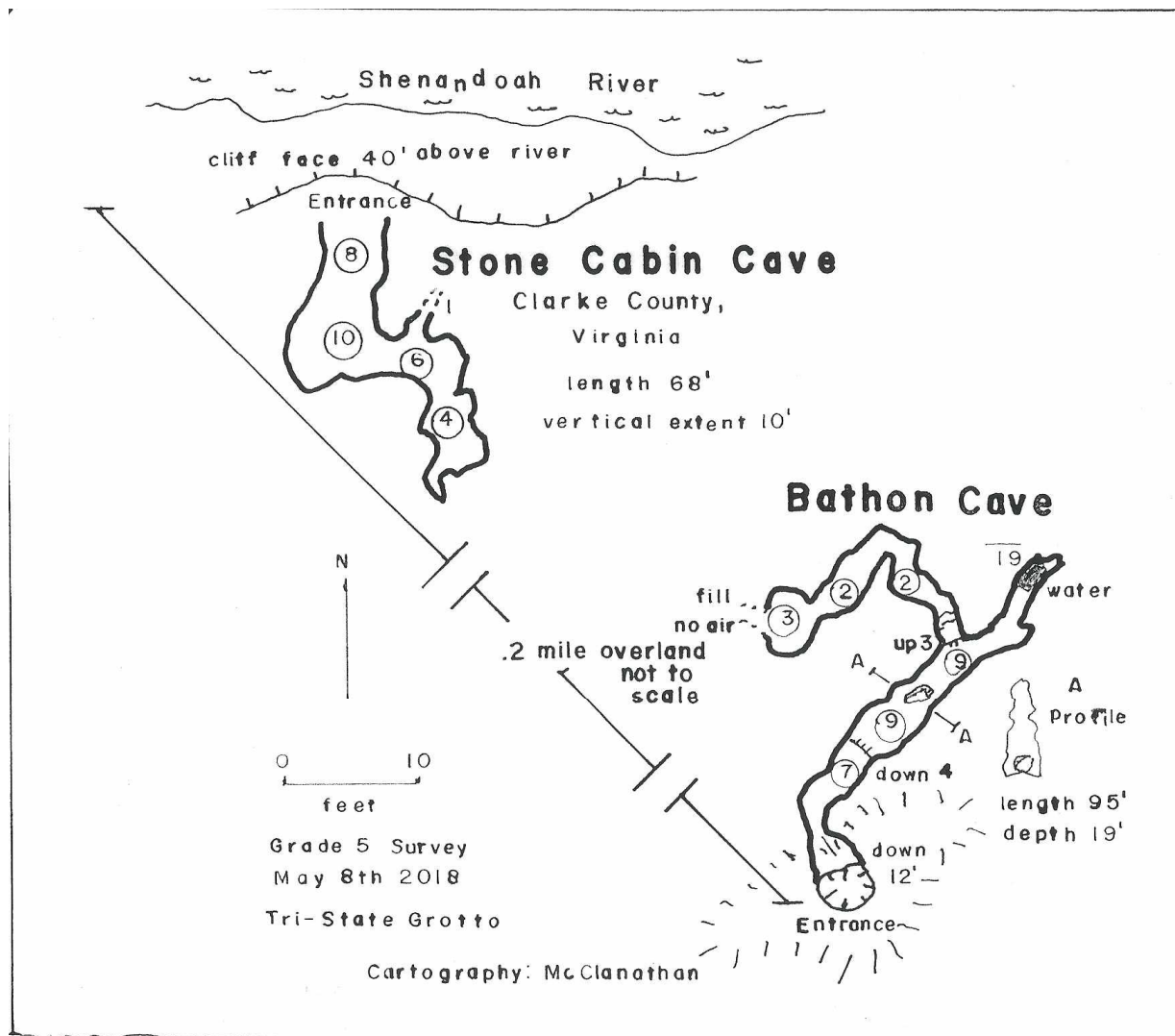
Bathon inside looking out (Bob Edmonds)



Typical passage in Bathon (Earl Suitor)



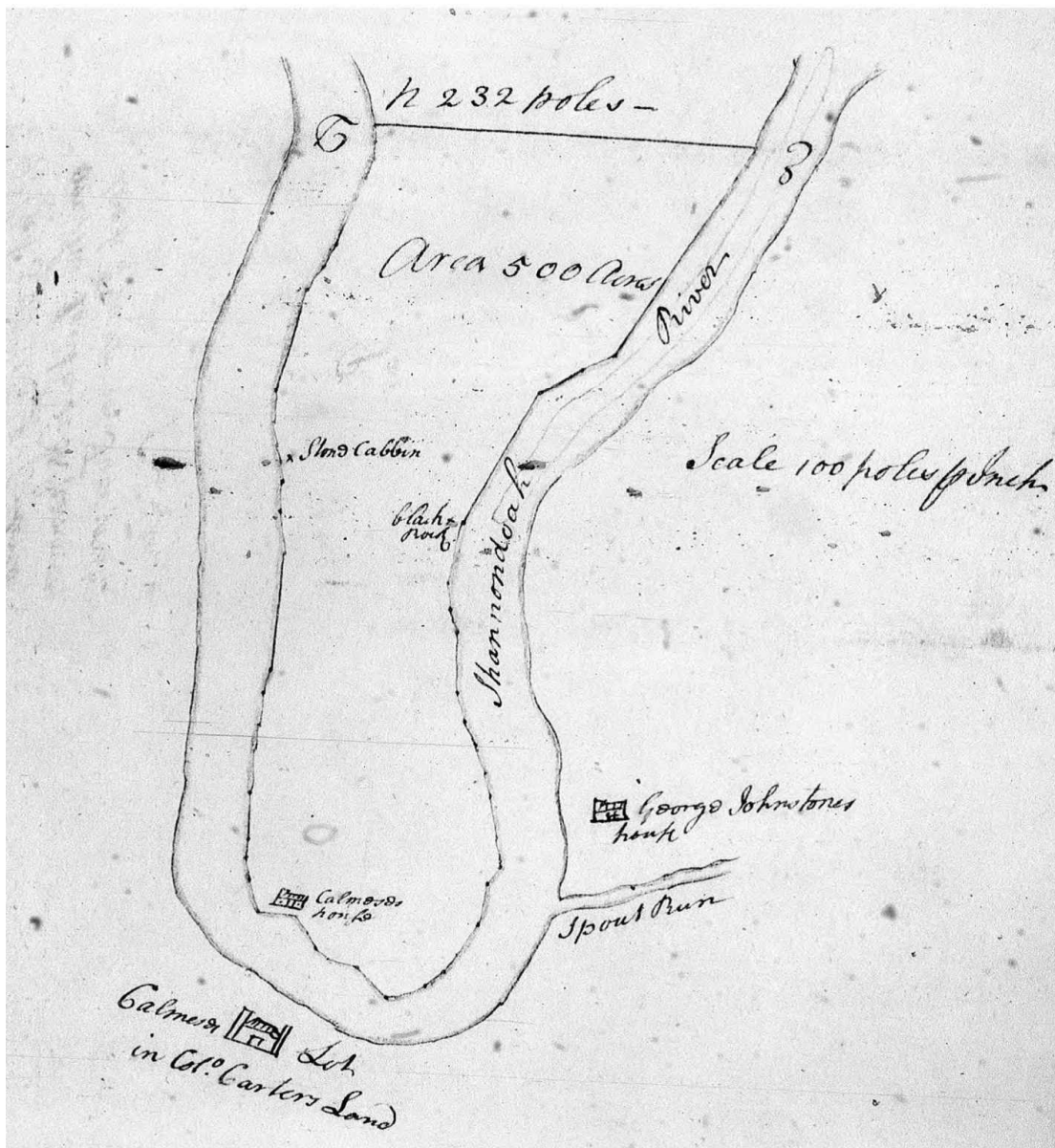
Bob B climbing through Bathon (Bob Edmonds)



Survey Crew for Cabbin Cave (Bob Edmonds)



Terry Preparing to Survey Cabbin Cave (Earl Suitor)



300 YEAR OLD MAP



Finishing the survey of Calmes Neck (Bob B)

Saturday July 21- Beginning 9A Sinkhole Project Workday. Seeking volunteers to help separate remaining bits of plastic and wood from the piles of dirt pulled from the sinkhole...and to help put in fence posts. If someone has a heavy-duty truck or trailer to haul small pieces of concrete that would be appreciated. LOCATION: 676 Melrose Rd. Rockingham, VA 22802

RSVP: helps for drink/snack count (food donations welcome) janete@shentel.net

BRING: rakes, shovels, gloves

Thank you!??



CAVIN CALENDAR

JULY 8TH - AUGUST 18TH



Sunday	Monday	Tuesday	Wednesday	Thursday	Friday	Saturday
Jul 8 JQ TRIP - 930AM	Jul 9	Jul 10	Jul 11  MEETING 700 PM	Jul 12	Jul 13	Jul 14 ANNUAL TSG PICNIC C & O CAMPGROUND 12 NOON WVACS CLASSIC SEE DAVE SOCKEY
Jul 15 WVACS CLASSIC SEE DAVE SOCKEY	Jul 16	Jul 17	Jul 18  VERTICAL SESSION JAMES RUMSEY 6PM	Jul 19	Jul 20	Jul 21 Ridgewalk 8:45 am - see Bob
Jul 22	Jul 23	Jul 24	Jul 25	Jul 26	Jul 27	Jul 28 HARMAN CAVE DIG with SENECA CAVE CLUB - see Bob or Tom
Jul 29	Jul 30  NSS CONVENTION at Helena, MT	Jul 31  NSS CONVENTION at Helena, MT	Aug 1  NSS CONVENTION at Helena, MT	Aug 2  NSS CONVENTION at Helena, MT	Aug 3  NSS CONVENTION at Helena, MT	Aug 4
Aug 5	Aug 6	Aug 7	Aug 8  MEETING 700 PM	Aug 9	Aug 10	Aug 11
Aug 12	Aug 13 LEFT HANDER'S DAY	Aug 14	Aug 15  VERTICAL SESSION JAMES RUMSEY 6PM	Aug 16	Aug 17	Aug 18

DEAD DOG DISPATCH



Cascade Cave, Jefferson Co, WV (Bob B)

DEAD DOG DISPATCH

TRI-STATE GROTTO OF THE NSS
BOB BENNETT, BOB BENNETT, ED
464 HUCKLEBERRY DR
GERRARDSTOWN, WV 25420-0344
304-671-0344
gimpycaver@comcast.net

