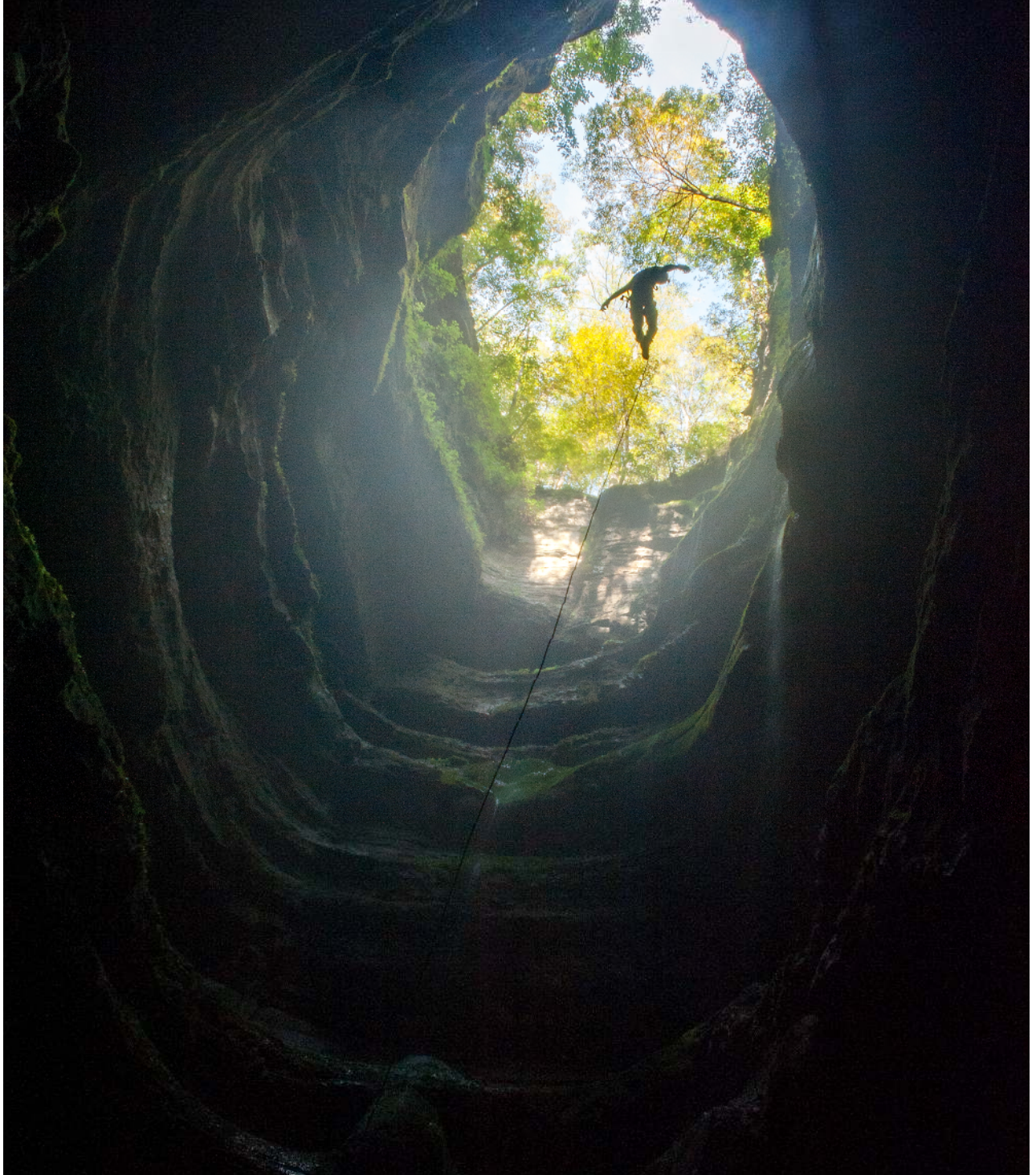


DEAD DOG DISPATCH

TRI-STATE GROTTO



THE FAIRY GODFATHER IN NEVERSINK

VOL. #30

ISS. #10

OCT

2015

#127



SUBSCRIBING MEMBERSHIP-\$12.00 (*Non-Voting*)
FAMILY MEMBERSHIP -----**\$2.00/FAMILY**
LIFETIME MEMBERSHIP ---- **\$200.00**
SUSTAINING MEMBERSHIP ---- **\$50/YEAR**
 (SUSTAINING-\$50/yr until \$200 total is met)
 (FULL FAMILY-must be NSS)(Voting rights if over 16)
 (FAMILY ASSOCIATE-non NSS)(Voting over 16)

Payment of DUES can be made at MONTHLY MEETINGS
 or can be SENT TO:

The **DEAD DOG DISPATCH** is a publication of the **TRI-STATE GROTTTO** of the NSS. The OPINIONS expressed herein are not necessarily those of the EDITOR, the GROTTTO, nor the NSS. Material that is unsigned may be attributed to the EDITOR. Material contained within this PUBLICATION may be reproduced by the NSS and its GROTTOS, provided that PROPER CREDIT is given to the **DEAD DOG DISPATCH** and the AUTHOR.

JERRY BOWEN, TREASURER
 TRI-STATE GROTTTO of the NSS
 17817 STONE VALLEY CR.
 HAGERSTOWN, MD 21740
 301-465-2651

E-MAIL: bookmaker-jb@mvactv.net

For MEMBERSHIP INFORMATION contact:

The **DEAD DOG DISPATCH** is a NON-PROFIT monthly newsletter published by the **TRI-STATE GROTTTO of the NSS**. SUBSCRIPTION RATES are \$12.00 per year to SUBSCRIBING MEMBERS, and **FREE** with FULL and ASSOCIATE MEMBERSHIPS to the **TRI-STATE GROTTTO**.

BOB BENNETT, MEMBERSHIP CHAIR
 TRI-STATE GROTTTO of the NSS
 464 HUCKLEBERRY DR.
 GERRARDSTOWN, WV 25420-0211
 304-821-4621

E-MAIL: gimpycaver@comcast.net

All material for inclusion in the **DEAD DOG DISPATCH** must be sent to the EDITOR NO BY THE **25TH** OF EACH MONTH.

*** The cover photo this month was taken by Nikki Fox in Neversink at the 2015 TAG Cave-In.

TRI-STATE GROTTTO OFFICERS

CHAIR ----- John DiCarlo ----- 301-432-2323
 V-CHAIR ----- Bob Bennett ----- 304-821-4621
 TREASURER--- Jerry Bowen ----- 301-790-0476
 SECRETARY -- Paulette Bennett --- 304-821-4621
 Member At Large --- Tom Griffin --- 240-676-3184
 Membership Chair --- Bob Bennett ---304-821-4621
 Newsletter Editor --- Bob Bennett ----304-821-4621
 Conservation Chair--Corey Hackley --301-432-2257
 P R Chair ----- JC Fisher ----- 304-258-4974
 Safety Chair ----- Tom Griffin -----540-955-0611
 Program Dir -----
 Funding ----- Paulette Bennett -----304-821-4621
 Equip. Chair ----Tom Griffin ----- 240-676-3184
 Youth Chair ----

**** Don't forget, the **JONES QUARRY BOOKLET** is **STILL** available at a reasonable price **\$6.00**. If you don't have it in your library, then YOU MUST GET IT. It is PACKED with info about the QUARRY, the CAVE, the INDIAN BONES, and of course the **MAP!** If you are interested in purchasing the BOOKLET, contact **BOB BENNETT 304-821-4621(H)** or **304-671-0344(C)** E-MAIL at gimpycaver@comcast.net

WE NEED EVERYONE TO KEEP THINKING ABOUT VOLUNTEERING FOR AN OPEN POSITION. WE STILL NEED SOMEONE FOR THE FOLLOWING POSITIONS: PROGRAM CHAIR
PLEASE GIVE IT SOME THOUGHT. WE NEED YOUR SUPPORT!



TRI-STATE GROTTTO MEMBERSHIP DUES ARE AS FOLLOWS:

FULL MEMBERSHIP -----**\$10.00** (*Must be NSS*)
ASSOCIATE MEMBERSHIP---**\$12.00** (*Non-NSS*)

DEAD DOG DISPATCH

V.#30

I.#10

OCT

2015

#128

CAVING EVENTS

2015

Month of September ----- **\$43.00**

TOTAL TO DATE: ----- **\$5996.50**

OCT 8-11 -- Fall TAG Cave-IN
OCT 11 ---- Jones Quarry - Marni Epstein - 10:20 am
OCT 12 ---- COLUMBUS DAY
OCT 14 ---- TSG meeting - 7pm - Annual Auction
OCT 17 ---- Bridge Day
OCT 31 --- ALL HALLOW EVE (HALLOWEEN)
NOV 1 ---- DAYLIGHT SAVING TIME ENDS
NOV 3 ---- ELECTION DAY
NOV 7 ---- Mystic Cave - See Bob
NOV 8 --- Jones Quarry Cave - Marni Epstein - 10:30 am
NOV 11 ---- VETERAN'S DAY
NOV 11 ---- TSG MEETING - 7PM - Nomination of
Grotto officers
NOV 14 ---- SADIE HAWKINS DAY
NOV 14 ---- WVCC Banquet - 7pm
NOV 21 --- 966 Scout Caving Trip - see Tom
NOV 26 ---- THANKSGIVING DAY
NOV 27 ---- BLACK FRIDAY
DEC 5 ---- Scout trip - See Tom & Bob
DEC 9 ----- TSG meeting - Elections - 7pm
DEC 12 --- Annual TSG Christmas Celebration at Bob &
Paulette Bennett's home - 7pm
DEC 13 --- Holiday caving
DEC 22 ---- WINTER SOLSTICE
DEC 24 ---- CHRISTMAS EVE
DEC 25 ---- CHRISTMAS DAY
DEC 31 ---- NEW YEAR'S EVE

2016

JAN 1 ---- NEW YEAR'S DAY
JAN 13 --- TSG meeting - 7pm
JAN 18 --- Martin Luther King Jr Day
JAN 24 --- TSG Birthday
JAN 29-31 --- Carter Caves Winter Adventure Weekend
FEB 2 ---- -Ground Hog Day
FEB 9 ---- Fat Tuesday
FEB 10 --- TSG Meeting - 7pm
FEB 14 --- VALENTINE'S DAY
FEB 15 --- President's Day
APR 22-24 --- Spring VAR - Endless Caverns
JUL 17-23 --- NSS Convention - Ely, NV

**The money was sent to SCCI.
Keep It Coming!**

WEBSITE & CAVING LINKS

Tri-State Grotto ----- www.tristategrotto.net/
VAR ----- www.varegion.org/
NSS ----- www.caves.org/
NSS Convention 2015 ----- <http://nss2015.caves.org>
OTR ----- www.otr.org/
MAR ----- www.caves.org/region/mar/
WVCC ----- www.wvcc.net/
Andy Celmer ----- www.tristategrotto.net/Andy/
Bob's Web Site ----- www.tristategrotto.net/Bob/
Jerry's Cave Web Site -----
----- <http://www.caves.org/member/jerry/>
Vitas Eidukevicius ----- www.tristategrotto.net/Vitas/
David Hackley's Web Site -----
----- <http://s180.photobucket.com/albums/x307/clearsig/>
Bob Gulden ----- www.caverbob.com/home.htm/
Rock Climbing Knots Friction -----
www.chockstone.org/TechTips/prusik.htm#Bachman/
Tri-State Grotto MySpace -----
----- www.myspace.com/tristategrotto/
Animated Knots by Grog ----- www.animatedknots.com/
White Nose Syndrome -----
<http://www.caves.org/grotto/dcg/wns-notice-to-cavers.pdf>
WV Caver ----- <http://wvcaver.speleo.us>
WNS -----
<http://www.caves.org/WNS/WNS%20Info.htm/>
Containment Procedures -----
<http://www.fws.gov/northeast/whitenosemessage.html/>
Crystal Grottoes Caverns -----
www.crystalgrottoescaverns.com

***** CAVE BUCKS *****

CAVE BUCKS is a voluntary donation for cave purchases. The money is collected at each monthly meeting and sent to the Conservancy of choice. The money SHOULD NEVER be kept past the week it is collected.

DEAD DOG DISPATCH

V.#30

I.#10

OCT

2015

#129



GROTTO BIRTHDAYS

MONTH OF OCTOBER

Tina Blaik, Ryan Boyce, Ken Carter, Bob Denton,
Margaret Hanson, Chris Hogbin, Sarah Scrivener,
Craig Stihler

HAPPY BIRTHDAY TRIP REPORTS

Assault on a Trashed Sinkhole

By John DiCarlo NSS 21744

Falling Waters, WV-Our Wednesday Night Caving event found us back at the Yankauer parking lot. It was August 26, 2015. Tom Griffin, John Scrivener, Bob Bennett, and John DiCarlo met up in the parking lot. Grabbing our supplies we headed out. We made sure Bob had his walking stick this time.



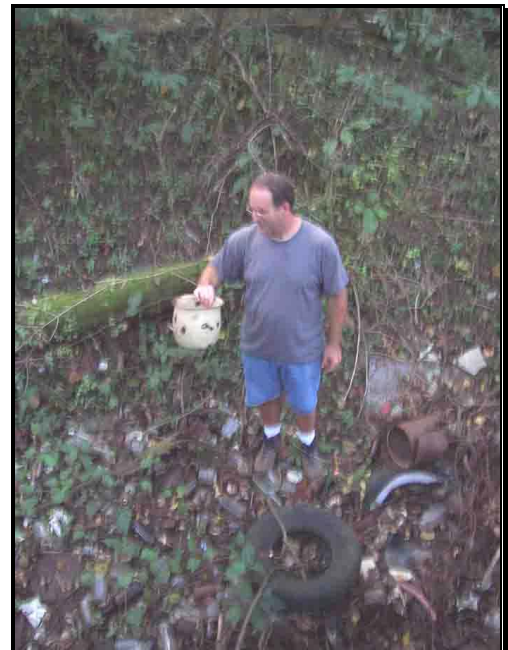
Bob Bennett with his walking stick.

We pushed our way through the thick brush. We looked at some rocks then made our way over to the trashed sinkhole.



Tom Griffin wonders where the rest of his car is. He could only find the fender.

Tom Griffin and John Scrivener went down into the sinkhole and started looking at the bottles and other items. They were old but nothing notable. Tom tossed a can from the bottom of the pile to an existing pile on the other side of the sinkhole. John joined in the can toss.



John Scrivener now has a pot to pee in

Soon they were down to fence wire. Tom grabbed the wire and pulled. It moved. It was soon rolled to the side.



Tom (L), John (C) and Bob are real rollers.

We were down to washed-in dirt.



There is a small opening in the top part of the bright light.

There was a little opening and John started digging on it. He shoved his arm and the shovel all the way into the hole.



Not only is John Scrivener's arm in the hole, but he's holding a shovel

John dug on it a little more before we decided it was getting dark and we had a long walk back to the cars. We will come back.

Wednesday Night Caving

By John DiCarlo

Martinsburg, WV-For our Wednesday night caving we were back in Martinsburg, WV. Tom Griffin, Bob Bennett, Bob Edmonds and I, John DiCarlo, met at Berkeley Plaza at 6 pm on September 16, 2015. From there we headed out. We took Tom's truck so we wouldn't stick out too much. We were not sure how much the area has been built up.

We crossed a secret bridge that goes over I-81. If you think there are only 8 bridges that carries cars and trucks over I-81 in Berkeley County (Sam Mason Rd, Runnymede Rd, Rt 51, Tabler Station

Rd, King St, Dry Run Rd, Hedgesville Rd, and Broad Ln.) then you don't know about this bridge.

After crossing the interstate, we drove up to where we were looking for a sinkhole. We couldn't see it with all the over grown brush so we got out. We split up and drove into the brush. We didn't find it so we moved through the weeds paralleling the road. Tom found an opening and called out to us. We made our way over to see what he found. It was an old stone culvert under the road. It was neat to see, but not what we were looking for. We made our way back to the road and headed back to the truck.



Stone Culvert

This time we went in the other direction looking for an opening. We found a different sinkhole that took a lot of water. It was plugged with weeds. You could see where water would fill the sink and over run it. It had stripped the vegetation down to the rock as it ran across it.



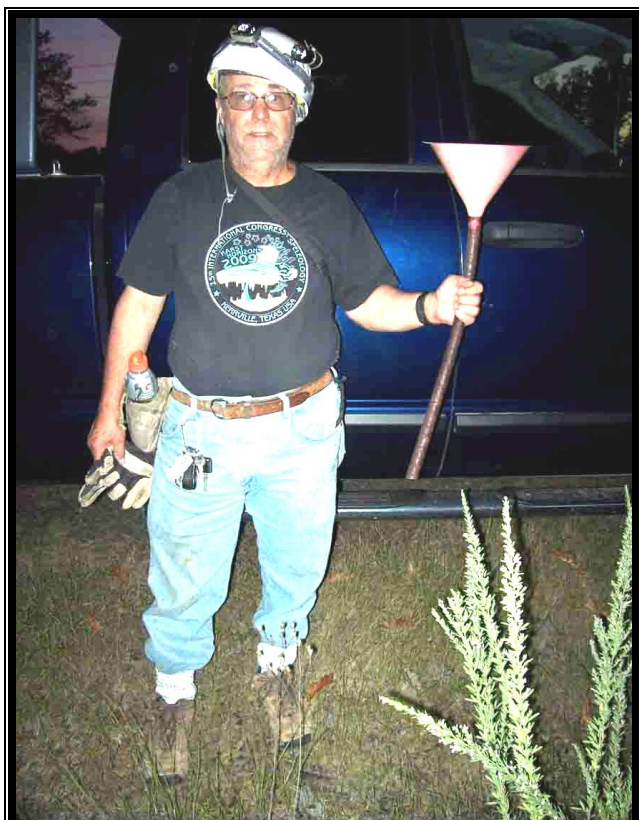
The plugged sinkhole

Moving on we found another opening. This was a concrete culvert this time. It was neat too, but again not what we were looking for.



The concrete culvert

By now it was almost dark and we headed back to the truck. All was not lost on this trip and we did come away with something. Somewhere along the way Bob Edmonds found a funnel.



**Bob Edmonds and the
funnel that he found.**

Also, Bob Bennett found an Eastern Box Turtle. He picked it up and it withdrew completely into its shell. We took a picture and Bob set it down, letting it go.



**Bob Bennett Found an
Eastern Box Turtle.**

August caving: Well, August turned out to be a rather busy caving month for me. Here is a brief summary of the month's activities.

August 4-6(Tuesday-Thursday) Marion O. Smith, Sharon Jones, Mark Lassiter, Terry McClanathan Being as we're all retired old goat (and one Goatet) we figured why not a trip during the week. I drove down to Marion's house in Tennessee Monday night and we started our adventures early Tuesday morning.

Our cave for the day was **Hold It Well** in Van Buren County. Marion's objectives were a couple of virgin pits and some booty scooping. Only Marion and I were present. Forging a sizeable creek (on foot), followed by a mile hike gaining 500 vertical feet put us at the entrance by late morning. We did a couple of short pits enroute to a new find of Marion's. This turned out to be a very fine 118 foot mostly clean pit. I queried Marion as to why he was taking me to such a nice pit so early in the trip (he normally saves the nice stuff for last). He replied that if we didn't do it early, we certainly wouldn't feel like doing it later. I was soon to learn why.

Hold It Well was a comparatively short, but complex contact cave. This meant lots of loose breakdown and copious quantities of mud. We next worked our way into a passage which had a couple of holes in the floor. These were two of Marion's objectives. One we had to do considerable enlargement on, the other required a lot of "gardening" to make it safe for entry. The former was lined with peanut butter mud and no place for a rope to go but right down through it. While most of the cave was muddy, this stuff was really awful. Everything (us, climbing gear, rope) got coated to the point of being unrecognizable. Seemed like we were just two moving mud balls carrying around other gobs of mud. Both pits were dead bottom and taped at 27 feet.

Next we wormed our way into another passage where we cleaned the edge of a ten foot drop into a passage that, while of large dimension, had not yet been entered. This netted us about sixty feet of booty, so Marion was appeased. In Hold It Well we did drops of 33, 26, 118, the two virgin 27 footers,

and ten feet for a total of 240 feet of rope work. Our exit from the cave was slow, our exit from the mountain was slow, and it took us most of the evening to clean ourselves and our gear.

On Wednesday Marion and I were joined by an old caving friend from the 70's, Mark Lassiter, currently residing at Whiteside Mountain in western North Carolina. The plan was to return to **Enigma**, a cave Marion had taken me to the previous Autumn, featuring a massive dome. Since the earlier trip Marion had recruited some aid climbers like Elliot Stahl and Mike Green, both young stalwarts currently residing in TAG, to access various high leads in the cave. The objective here was for Marion to take to as many new pits as possible and then, if time allowed, to check out passage found by Elliot, Mike and crew after they'd reached the top of the waterfall in the big dome. We did new pits of 54, 31, 41, 18, 26, 134, and 140 feet. The 134 was a higher rig point of a 66 footer I'd bolted on our last trip. This was a very nice clean, dry, mostly free drop.

After touring all these pits we worked our way to the top of the high dome. Marion went a different route than Mark and I. We chose to climb the fixed rope in the dome, while Marion, not being particularly fond of hanging rebelay (there are five), opted for a backdoor approach. We had a discussion of sorts at the top and decided that having already spent a lot of time bouncing pits in the cave, it probably wasn't the wisest course for us to attempt the aerial acrobatics needed to access the top of the waterfall and passages beyond. Besides it was getting late in the evening. We retreated from the top of the dome in the same manner we'd accessed it, with Mark and I going back down the pit and Marion doing his thing. This time I had my hundred meter tape with me and Mark and I taped the drop at 222 feet. The "new to me" pits in Enigma totaled 444 feet, which combined with pits I'd already done in the cave totaled 789 feet. This makes Enigma one of the most vertical jungle gym caves in TAG.

On the last day of our adventure, Sharon Jones joined Marion and I in search of a pit that had only been found a year early and was reported to be

around 130' deep. It was called **Bitter Sweet Drop** and was also in Van Buren County. The catch... Marion had only an approximation of its location on the mountain. Finding it would be iffy. None of us had ever been there and it was a small dug opening. To make a long story short, we did eventually find it (well, I did anyway). The entrance was a little tricky getting into, but once in the actual pit, it was quite fine. We taped it at 134 feet.

For the three days I'd amassed a total of 816 feet of new vertical, including four new hundred footers. It'd been a long time since I got four new pits over 100 feet deep during one trip. I drove back to Maryland with a big smile on my face. As always, many thanks to Marion and Sharon for their gracious hospitality.

August 13th: **Middle Earth Cave**, Jerry Bowen, John Fredericks, me

I'd wanted to visit Middle Earth (Greenbrier County) for several years, ever since I'd been refused permission on an earlier attempt. I since found out that my mistake was trying to go too close to hunting season. This time we had no problems. It's a very pretty cave. Jerry had been there before and proved a very capable guide. We were joined by an old West Virginia caving friend of mine, John Fredericks. Our trip lasted about four hours and was very enjoyable. The formation rooms above the hand line climb up were especially nice.

August 14th-16th - **Kimble Pit** camp trip-my time 49 hours

Adam Byrd, Gilly Elor, Corey Hackley, John Harman, Terry McClanathan, Aaron Moses

While known since the 70's, this Germany Valley cave has, except for a brief period during the Hellhole mapping project of the early 2000's, been closed by the landowners. Recent purchase of the property by John Harman's parents has resulted in exponential growth over the past couple of years. During this time Kimble has grown from a 500' long cave to nearly four miles. The rigorous nature of the nearer sections of the cave lead to the establishment of a camp about 2000 feet in to facilitate future mapping efforts. About a

dozen cavers have been involved in exploration and survey so far, but most of the real accomplishments have been due to the efforts of the five cavers listed above (minus me). And these accomplishments have been pretty staggering. Besides miles of new survey, the cave has been explored to a depth of over 400 feet, making it one of the deepest in West Virginia. Several large rooms have been discovered with formation galleries that rival or exceed anything in the state. The list of leads is almost too numerous to fathom.

Trips to the far reaches of Kimble are arduous, though the rewards are great. Noteworthy obstacles include the 169' entrance shaft and nearly 2000 feet of "in your face" caving to reach camp. Within this trek is Justice Canyon, 500 feet of mostly roped traverse along slippery mud-coated ledges across a canyon where a slip or gear loss would present a major problem. There are also several other pits up to forty feet deep just before arriving in camp. The pre-camp cave passages are much muddier than most of Hellhole-Shoveleater or Memorial Day caves.

On our trip we split into two teams, beginning new survey nearly 3000 feet beyond camp. Aaron rigged a series of pits up to about 30 feet deep which lead us to new boreholes one after the other. There were big leads seemingly everywhere. Our two teams mapped about 1400 feet of new passages. It appears that Kimble may be the new "baby" that will be growing in Germany Valley for some time to come.

August 29th - **Tanglefoot**- Grant Blaisdell, Ryan Boyce, Corey Hackley, Terry McClanathan, Dave Schoenadel

We hadn't been back to survey in Tanglefoot for a year. Our previous trip being last summer when we took the MPT folks for a look see. Their footage still hasn't been shown yet, but we did get a recent memo stating that it should air soon. Tanglefoot is an interesting cave with some nice internal passages, but getting there by either the upper or lower entrances is not pleasant. It ranks as the most difficult non-vertical cave I've ever explored. For me personally, it's one of the few caves where one of the nicest things about a trip is when it's over.

Having said this, the cave can boast several superlatives. It will be the deepest cave in the northeast when the survey is complete. A through trip from the upper to the lower entrance traverses about 435 vertical feet, and there's still significant vertical to be gained by surveying above the upper entrance. Corey thinks 500' is very possible. It's the longest cave in Maryland. It may also be the muddiest.

Our objectives for this trip were three-fold. We were only a couple hundred feet short of the one mile mark with the survey. We figured we'd have no problem with this. Corey also wanted to fill in some sketching and re-check some of our previous data for possible errors.

By late morning we were all slithering our way in through the hundred foot liquid mud crawl just inside the lower entrance. Even on this hot late August day there was still a chilling breeze blowing through it. You'd think these conditions would dry it out somewhat, but it doesn't help. It always seems to exhibit that one constant, extreme gooey slop. Did I mention that for the entire length the maximum height is one foot, except in one twenty foot section where it's lower, and with a helmet on you cannot even turn your head from side to side.

Corey hung back sketching while the rest of us proceeded up through the mountain to a tight body tube located about a fourth of the distance to the upper entrance. Here we split into two teams. Ryan and Grant went to work checking several old stations for errors. On the original exploration it was found that Dave could not fit through the body tube, but being a determined character, he had found a way around it through some lower wide sections of "pancake" passages. When we (Dave and I) first mapped this we'd followed his original route, but I had subsequently found another route which was lower still. Our plan was to map this. It was all low, parts were muddy, and it was generally not a very fun place to work. But after a couple hours work, our mission was complete. By now Corey was back with us so we had a short pow-wow on strategy. Grant needed to head out and both Dave and I were also ready to abort. It was decided that Dave and I would put a couple of shots

down a nice side passage, then guide Grant out. We stopped where the passage started to get less nice and placed our last station. Corey and Ryan continued mapping and ended up tying into this station to close a nice little loop.

Our trip times ranged between nine and eleven hours with Dave, Grant, and I exiting an hour or so before Ryan and Corey. Dave and I had surveyed about 140 feet (don't laugh, in Tanglefoot that can be quite an accomplishment), while Corey said he and Ryan netted around 300 feet. This brings the present survey up to about 5500 feet, so as Corey pointed out, Maryland finally can boast of having a cave on the long caves list.

Terry McClanathan NSS 12103

Sharps

I was able to go on my first trip with the Student Grotto this weekend. The group went to Sharps Cave which is not too far outside of Snowshoe WV. The cave is pretty easy to find once you got onto the correct trail. The entrance was a three foot wide hole and one foot long. The first section is a short 7 foot drop into the entrance series. From there you have to negotiate some breakdown and you get into the first room. The rooms in this cave are of considerable size. The group worked its way back into what is called the "Mud Room" where you can find literally hundreds of small sculptures made from cave mud. If you go beneath the mud room and work your way down the cave and back towards the entrance you will eventually find a waterfall. After the group worked back from the waterfall and to the Mud Room there was a vote to go to the "Big Room." It was the general consensus that we all felt like we could keep caving, if we all had known what we were getting into we would have certainly not agreed to go any further. The passage to the Big Room involves belly crawling through a stream and bumping every inch of your body into oddly formed limestone and popcorn formation. After about a quarter mile of this passage we entered into the Big Room which did own up to its name but barely seemed worth the trip we had made. After about a 6 hour cave trip we exited to a rainy West Virginia day and the snacks we had packed in the car had never tasted better.

Sorry I was not able to take any pictures there was a considerable lack of photo opportunities

Shawn Hogbin
Keep Kaving

Please pass this on to the Tri State Grotto.

Almost two decades ago Craig Stihler showed me an old report and map from the 1950's where someone had located a cave with Virginia big-eared bats (VBEBs) in it. The cave was not Lambert Cave, but Gale Warner Cave, which DNR did not know about. Lambert Cave was on the map but it did not have any VBEBs reported in it. Gale Warner Cave had roofing material dumped in it twice in my life time, which excluded the bat colony. As a result the bats must have moved to Lambert Cave. It took six years to obtained permission to clean out the sinkhole and officially close Gale Warner Cave in 1999, for five years, hoping VBEBs would reoccupy it. Craig said no lost VBEB habitat has ever been reoccupied. The highest count over the years was four VBEBs. It takes five for a cave to be listed as a VBEB cave. Even though the cave was only closed for five years the GVKs have kept the cave closed in the summer for the last 15 years. In June Craig Stihler emailed me that the Virginia Big-eared bat count in Lambert Cave was the highest it has ever been, 517 bats. He suspected the colony might split and reoccupy Gale Warner Cave once again. He asked me to check it this summer and send a report. Today several of my grand-children and I checked the cave. We found two clusters of 50 and 30 VBEBs. All were adults, most likely males, which have been driven out by the noise made by the females and young in Lambert Cave.

With all the negative bat reports over the past years this is welcomed news. Hopefully, all VBEB colonies in the Pendleton Region are also experiencing this type of growth. With this being the first successful reoccupation of lost VBEB habitat I would like to thank all those who did the work back in 1999. As I looked back through the photos of the clean-up I noticed Tri State Grotto provided most of the labor. As a result you share in our success.

I know I did not expect it to take 15 years for the bats to reoccupy the cave and on many occasions I considered the experiment a failure. Today I learned something! Thanks for your help.
Rick Lambert



CAVING CALENDAR

OCTOBER 11TH - NOVEMBER 21ST



| Sunday | Monday | Tuesday | Wednesday | Thursday | Friday | Saturday |
|---|---|---------------------------------|---|---------------|---------------|--|
| Oct 11 Jones Quarry Cave-Marni Epstein 10:30 am Fall TAG Cave-In | Oct 12 Fall TAG Cave-In COLUMBUS DAY | Oct 13 | Oct 14  Meeting 7pm Annual Auction | Oct 15 | Oct 16 | Oct 17 Bridge Day |
| <i>Oct 18</i> | <i>Oct 19</i> | <i>Oct 20</i> | <i>Oct 21</i> | <i>Oct 22</i> | <i>Oct 23</i> | <i>Oct 24</i> |
| <i>Oct 25</i> | <i>Oct 26</i> | <i>Oct 27</i> | <i>Oct 28</i> | <i>Oct 29</i> | <i>Oct 30</i> | Oct 31  ALL HALLOW EVE |
| Nov 1 DAYLIGHT SAVING TIME ENDS | <i>Nov 2</i> | Nov 3 ELECTION DAY | <i>Nov 4</i> | <i>Nov 5</i> | <i>Nov 6</i> | Nov 7 Mystic Cave - see Bob B |
| Nov 8 Jones Quarry Cave - Marni Epstein 1030 am | <i>Nov 9</i> | <i>Nov 10</i> | Nov 11  Meeting 7pm - Nominations  VETERAN'S DAY | <i>Nov 12</i> | <i>Nov 13</i> | Nov 14 WVCC Banquet 7pm Sadie Hawkin's Day |
| <i>Nov 15</i> | <i>Nov 16</i> | <i>Nov 17</i> | <i>Nov 18</i> | <i>Nov 19</i> | <i>Nov 20</i> | Nov 21 Troop 966 Scout caving trip-see Tom |

DEAD DOG DISPATCH



Tom Relaxing Before the Trip (JohnD)

DEAD DOG DISPATCH

TRI-STATE GROTTO OF THE NSS
BOB BENNETT, BOB BENNETT, ED
464 HUCKLEBERRY DR
GERRARDSTOWN, WV 25420-0344
304-821-4621
gimpycaver@comcast.net



TO:

