

DEAD DOG DISPATCH TRI-STATE GROTTO



**GYPSUM IN UPPER HEMPLE HIGHWAY,
FRIARS HOLE**

VOL. #28

ISS. #1

JAN

2013

#1



The **DEAD DOG DISPATCH** is a publication of the **TRI-STATE GROTTO** of the NSS. The OPINIONS expressed herein are not necessarily those of the EDITOR, the GROTTO, nor the NSS. Material that is unsigned may be attributed to the EDITOR. Material contained within this PUBLICATION may be reproduced by the NSS and its GROTTOs, provided that PROPER CREDIT is given to the **DEAD DOG DISPATCH** and the AUTHOR.

The **DEAD DOG DISPATCH** is a NON-PROFIT monthly newsletter published by the **TRI-STATE GROTTO of the NSS**. SUBSCRIPTION RATES are \$12.00 per year to SUBSCRIBING MEMBERS, and **FREE** with FULL and ASSOCIATE MEMBERSHIPS to the **TRI-STATE GROTTO**.

All material for inclusion in the **DEAD DOG DISPATCH** must be sent to the EDITOR NO LATER THAN THE **25TH** OF EACH MONTH.

TRI-STATE GROTTO OFFICERS

CHAIR ----- John DiCarlo ----- 301-432-2323
 V-CHAIR ----- Bob Bennett ----- 304-579-4304
 TREASURER--- Jerry Bowen ----- 301-790-0476
 SECRETARY – Paulette Bennett ---- 304-579-4304
 Member At Large ----
 Membership Chair --- Bob Bennett ---304-579-4304
 Newsletter Editor --- Bob Bennett ----304-579-4304
 Conservation Chair--Corey Hackley --301-432-2257
 P R Chair ----- JC Fisher ----- 304-258-4974
 Safety Chair ----- Carl Amundson ----540-955-0611
 Program Dir -----
 Funding ----- Paulette Bennett -----304-579-4304
 Equip. Chair ----Bob Bennett ----- 304-579-4304

TRI-STATE GROTTO MEMBERSHIP DUES ARE AS FOLLOWS:

FULL MEMBERSHIP -----**\$10.00** (*Must be NSS*)
 ASSOCIATE MEMBERSHIP---**\$12.00** (*Non-NSS*)
 SUBSCRIBING MEMBERSHIP-**\$12.00** (*Non-Voting*)
 FAMILY MEMBERSHIP -----**\$2.00/FAMILY**
 LIFETIME MEMBERSHIP ---- **\$200.00**

DEAD DOG DISPATCH

V.#28

I.#1

JAN

2013

#2

SUSTAINING MEMBERSHIP ---- \$50/YEAR
(SUSTAINING-\$50/yr until \$200 total is met)
(FULL FAMILY-must be NSS)(Voting rights if over 16)
(FAMILY ASSOCIATE-non NSS)(Voting over 16)

Payment of DUES can be made at MONTHLY MEETINGS or
 can be SENT TO:

JERRY BOWEN, TREASURER
 TRI-STATE GROTTO of the NSS
 17817 STONE VALLEY CR.
 HAGERSTOWN, MD 21740
 301-790-0476

E-MAIL: bookmaker-jb@myactv.net

For MEMBERSHIP INFORMATION contact:

BOB BENNETT, MEMBERSHIP CHAIR
 TRI-STATE GROTTO of the NSS
 464 HUCKLEBERRY DR.
 GERRARDSTOWN, WV 25420-0211
 304-579-4304

E-MAIL: gimpycaver@comcast.net

*** The photo on the cover was taken by Nikki Fox
 in Friars Hole System.

**** Don't forget, the **JONES QUARRY BOOKLET** is **STILL**
 available at a reasonable price **\$6.00**. If you don't have it in
 your library, then YOU MUST GET IT. It is PACKED with
 info about the QUARRY, the CAVE, the INDIAN BONES, and
 of course the **MAP!** If you are interested in purchasing the
 BOOKLET, contact **BOB BENNETT [304-579-4304(H) or**
304-725-3481 ext 491(W)](E-MAIL at
gimpycaver@comcast.net or JUDY FISHER [304-258-
4974(H) or 304-258-1822(W)](E-MAIL at
jcf@access.mountain.net)

WE NEED EVERYONE TO KEEP THINKING ABOUT
VOLUNTEERING FOR AN OPEN POSITION. WE
STILL NEED SOMEONE FOR THE FOLLOWING
POSITIONS:

PROGRAM CHAIR
MEMBER at LARGE

PLEASE GIVE IT SOME THOUGHT. WE NEED YOUR
SUPPORT!



CAVE IN EVENTS

2013

JAN 1 ----- NEW YEAR'S DAY
JAN 9 ----- TSG meeting – 7pm
JAN 12 ----- Adam Stephen dig – 9am
JAN 21 ----- MARTIN LUTHER KING JR DAY
FEB 2 ----- GROUND HOG DAY
FEB 3----- SUPER BOWL
FEB 12 ----- FAT TUESDAY
FEB 13 ----- TSG meeting – 7pm
FEB 14 ----- VALENTINE'S DAY
FEB 16 ----- Crystal Grottoes dig – 10am
FEB 18 ----- PRESIDENT'S DAY
MAR 10 ----- DAYLIGHT SAVING TIME BEGINS
MAR 13 ----- TSG meeting – 7pm
MAR 17 ----- ST. PATRICK'S DAY
MAR 20 ----- SPRING EQUINOX
MAR 22 ----- WORLD WATER DAY
MAR 25 ----- MD DAY
MAR 29 ----- GOOD FRIDAY
MAR 31 ----- EASTER
APR 1 ----- ALL FOOL'S DAY
APR 10 ----- TSG meeting – 7pm
APR 15 ----- TAX DAY
APR 22 ----- EARTH DAY
APR 26 ----- ARBOR DAY
MAY 2 ----- National Prayer Day
MAY 3-5 – Spring MAR – Woodward Cave, PA
MAY 5 ----- CINCO de MAYO
MAY 8 ----- TSG meeting – 7pm
MAY 11 --- ADAM STEPHEN DAY
MAY 12 ---- MOTHER'S DAY
MAY 17-19 – Spring VAR – Hosted by Tri-State Grotto –
Buckskin Scout Camp, Pocahontas Co, WV
MAY 18 ---- ARMED FORCES DAY
MAY 27 ---- MEMORIAL DAY
JUN 7-9 ---- Bubble weekend
JUN 12 ---- TSG meeting – 7pm
JUN 14 ---- FLAG DAY
JUN 16 ---- FATHER'S DAY
JUN 20 ---- WV DAY
JUN 21 ---- SUMMER SOLSTICE
JUL 4 ----- INDEPENDENCE DAY
JUL 10 ----- TSG meeting – 7pm
JUL 28 ----- PARENT'S DAY
AUG 2-3 ---- Convention Pre-Camp – Hosted by Tri-State
Grotto
AUG 5-9 ---- NSS Convention, Shippensburg, PA
AUG 14 ---- TSG Meeting – 7pm
AUG 29-31 – OTR
AUG 31 ---- Doo Dah Parade – 10am
AUG 31 ---- Polyester Power Hour – 1:00 pm
SEP 2-3 ---- OTR

SEP 3 ----- LABOR DAY
SEP 8 ----- Grand Parent's Day
SEP 11 ---- TSG Meeting – 7pm
SEP 22 ---- AUTUMNAL EQUIUNOX
SSEP 29 --- World heart Day

***** CAVE BUCKS *****

CAVE BUCKS is a voluntary donation for cave purchases. The money is collected at each monthly meeting and sent to the Conservancy of choice. The money SHOULD NEVER be kept past the week it is collected.

Month of December ----- \$9.00

TOTAL TO DATE: ----- \$5321.00

The money was sent to SCCI!

Keep It Coming!

WEBSITE & CAVING LINKS

Tri-State Grotto ----- www.tristategrotto.net/
VAR ----- www.varegion.org/
NSS ----- www.caves.org/
NSS Convention 2010 ----- <http://www.ics2009.us/>
OTR ----- www.otr.org/
MAR ----- www.caves.org/region/mar/
WVCC ----- www.wvcc.net/
Andy Celmer ----- www.tristategrotto.net/Andy/
Bob's Web Site ----- www.tristategrotto.net/Bob/
Ehren Gieske ----- www.tristategrotto.net/Ehren/
Jerry's Cave Web Site -----
<http://www.caves.org/member/jerry/>
Vitas Eidukevicius ----- www.tristategrotto.net/Vitas/
David Hackley's Web Site -----
<http://s180.photobucket.com/albums/x307/clearsig/>
Todd Roberts -----
http://s63.photobucket.com/albums/h143/Todd_05/
Bob Gulden ----- www.caverbob.com/home.htm/
Rock Climbing Knots Friction -----
www.chockstone.org/TechTips/prusik.htm#Bachman/

DEAD DOG DISPATCH

V.#28

I.#1

JAN

2013

#3

Tri-State Grotto MySpace -----
 ----- www.myspace.com/tristategrotto/
 Animated Knots by Grog ----- www.animatedknots.com/
 White Nose Syndrome -----
<http://www.caves.org/grotto/dcg/wns-notice-to-cavers.pdf>
 WV Caver ----- <http://wvcaver.speleo.us>
 WNS -----
<http://www.caves.org/WNS/WNS%20Info.htm/>
 Containment Procedures -----
<http://www.fws.gov/northeast/whitenosemessage.html/>
 Crystal Grottoes Caverns -----
www.crystalgrottoescaverns.com



MONTH OF JANUARY

Chris Coates, Danny Cumbo, Keith
 Hammersla, Tim McDougle, Judy Fisher,
 Sonny Floyd, Bob Gray, Stacey Hajenga,
 Van Pell, Jason Rice, Earl Suitor,
 Fiord'aliza Vis

HAPPY BIRTHDAY



Tri-State Grotto Meeting
 December 12, 2012

John called the meeting to order at 7:00 pm.
 Jerry gave the Treasurer's report.

Old Business: Jeff gave VAR updates – May 17-19
 Adam Stephen Day – May 11
 We will be hosting a Convention pre-Camp at KOA
 near Hagerstown, MD
 Headlights will be brought up at a later date.
 Bob will have a list of Grotto Books in the Library
 by February.

New Business: Adam Stephen dig – 9 am
 Crystal Grottoes dig – 10 am
 Silers Cave is closed due to Insurance Problems!
 Will plan cave trip at Christmas party

Officers Elections : Same officers were railroaded
 for next year!

Cave Trips: Whittings Neck – Vitas
 Jones Quarry – Stephen
 Tanglefoot – Terry

Cave Bucks: \$9.00 – Going to SCCI

John closed the meeting at 8:15 pm

Respectfully submitted:
 Paulette Bennett, TSG Recording Secretary



Friars Hole (Monster Cavern Waterfall)

For quite some time I had been wanting to tape
 the waterfall drop in the Monster Cavern Room of
 Friars Hole System. This was first climbed in 1980
 by a team lead by Bill Stone and Bob Jeffreys,
 which was quite a feat considering they did it all
 without the power drills in use today. The drop was
 generally thought to be around a hundred feet, and
 Bill told me recently that he was pretty sure it
 would exceed that figure.

I had been to Monster Cavern several times over
 the decades, but only using the Canadian Hole
 entrance, from which it only takes a bit over an hour
 to get there. My last trip was twenty years ago when
 I lead a group of TAG caving friends on a pull
 down from Canadian Hole and out Crookshank,
 which I had pre-rigged early in the morning. On that
 trip we made a quick stop at the Monster Cavern, a
 ten minute detour away, and the total pull-down
 only took a little under seven hours to complete. So
 when, about three years ago, some GVKs cavers
 expressed an interest in going there, I volunteered to

DEAD DOG DISPATCH

V.#28

I.#1

JAN

2013

#4

lead a trip. I knew the Canadian Hole entrance had been closed for a long time. In fact Robert Mothes, owner and caretaker of the Friars Hole Cave Preserve, had informed me that it was closed when I lead the '92 trip, but I didn't know that then. That left two viable options, the Crookshank Pit or the Snedegars entrances. I never liked the long mucky Snedegars-Crookshank connection. So Crookshank Pit it would be.

At the time, three years ago, I was confident I knew the route well. So confident, in fact, that I disdained even consulting the map. My arrogance turned out to be a big mistake. That first attempt was a complete and embarrassing failure on my part as guide. I blamed it on two things: memory loss over the decades time lapse, and the realization that apparently I was a much more competent caver in my 40's than I am now in my 60's. Both of these are hard pills for me to swallow. I just didn't recall doing so much crawling, and convinced myself that we may have been in the wrong passage, not much of a confidence builder for being in a forty mile cave system. Later I looked at the map and saw that we were in fact in the right passage, but we hadn't even made it as far as the first connection into the Rubber Chicken part of the system. It seems I had forgotten an awful lot over the years. A trip to Monster Cavern from Crookshank was going to take a little more planning than I'd initially thought.

A couple of years went by and I decided I'd have to re-familiarize myself with the route before I attempted another effort. Last OTR weekend FCG's David Morrow, and Virginia cavers Chris Coates and Nikki Fox joined me for a trip I was sure this time would get us to our destination. Things went pretty well until we got near the end of the Hempel Highway borehole. I was sure I would recognize the route through the connection area into Canadian Hole when we got there. After all, hadn't I found my way through it with only minimal difficulty on three previous occasions, even if the last time was twenty years before. Once again I failed. By following the air we made it to a spot where the only way on seemed to be a low breezy stream crawl. Chris started into this, but my negativism and whining about not doing anything this hard on my earlier trips defeated our effort. We

routed.

Corey Hackley and I went back in mid-October. I knew Corey was great at route finding, and reasoned that if I just kept my mouth shut about there being an easier way, Corey would prevail. This time we were successful. So in the end it only took three tries to retrace a route I was convinced I knew unfailingly three years ago. What can I say? I guess I'm just turning into an old buffoon.

I scheduled a trip for all interested for the first weekend in November but "Superstorm" Sandy intervened. Pocahontas County received 1-3 feet of snow early in the week and the thought of snowmelt falling into Crookshank Pit by the weekend put a major damper on my plans. I rescheduled for the third weekend, but only Chris and Nikki could make it. Well, at least there wouldn't be any route finding problems this time.

The trip to Monster Cavern is a wonderful caving experience. Any competent caver of not too large girth who is in pretty decent shape and can do a 12-15 hour trip should find it easily within their range. I'm writing this report with enough detail that it could be used as a step guide for cavers wanting to do so. The trip is neither easy nor hard. It's just long, but there is a lot of great caving along the way. From Crookshank to Monster Cavern is about three and a half miles one way. There is about half a mile of crawling (mile total for the in and out) spread out over seven major crawls ranging from about 150-500 feet in length. Five are on the near side (Crookshank) of the Hempel Highway and two are beyond it.

Crookshank Pit is best rigged using the bolt on the large boulder close to the edge to solve the rope-eating rat problem, and a second rebelay bolt about twenty feet down the pit to alleviate rope fraying. You would need a 160' rope from rigging tree to bottom. The pit seems to have shrunk. I taped it at only 85' from the breakover lip, a loss of 12' from the commonly referred to depth of 97'. The day Chris, Nikki, and I entered there was ice at the top and bottom of the drop, and although little water was actually falling down the pit, it was quite cold.

From the base of the pit a meandering walkway extends for a few hundred feet to a stream crawl. This becomes belly just before it slopes up into a T-

junction crawl. To the right leads to the “Terrible Crawl”. This looks like a convenient shortcut on the map, but it is aptly named. I don’t recommend it. Left at the T the crawl continues, first as a low-ceiling crawl, then becoming a cobble crawl to hands and knees, and finally to a stoopway, thus marking the end of the first crawl out of seven.

Now follows a nice walking, clean washed, and normally dry streamway for about five hundred feet to a junction. Left goes to a downstream sump. Turn right and follow this spacious canyon to the pools section. Very scenic, but be prepared to get wet from thigh to crotch. The last pool at the waterfall is the deepest, but can be avoided by climbing the ledges along the left wall. About a hundred feet beyond the top of the waterfall look for a stoopway with a small stream coming in on the right. This is the beginning of a series of generally low passages which eventually leads to the connection with Rubber Chicken, the large middle section of the Friars Hole System. This small stream passage can also be reached from Snedegars, but you would have to go through the wet Snedegar-Crookshank connection crawl.

The passage with the small streamlet quickly becomes the “Sloppy Crawl”, number two of the seven. It is not one of the longer ones, but it is a little mucky. You can avoid the worst of it by staying along the left wall. Where the stream lowers to belly-crawl, get out of it and go up through a small hole over clay banks high and to the left. This soon becomes a stoopway and then pops out into large passage going in two directions. The larger, and more inviting passage, leads to “Lew’s Last Climb”. It is nice and of large dimension, but it’s not the passage you want. Go right at the junction. This quickly becomes a duckwalk and then the beginning of the third crawl. In a couple hundred feet this crawl leads to another T-junction. Right leads back to the other end of the “Terrible Crawl”. Bear left to the “Promised Land”. This nice flat floored walkway is a welcome respite from the crawling, but it is, unfortunately, not very long. Near its end it reduces to a stoopway which soon becomes the fourth crawl. This is the easiest of the seven as it is only hands and knees and not very long. At the end it slopes up into a breakdown

room. Go across this and back down into a series of stoopways which soon lower to the fifth crawl.

The fifth crawl is rather long and interrupted by the connection between Snedegar-Crookshank and Rubber Chicken. Parts of this section also flood from time to time. After slithering through some low areas the connection breakdown squeezes must be negotiated. To reach these, as you crawl up into the breakdown, make a sharp right. Crawl downward though some snug spots in the rocks, then proceed forward through alternating crawls and stoopways for several hundred feet to the “Shark Room”.

The “Shark Room” forms a junction with several major passages in the Rubber Chicken section of the cave. Go upslope past the shark rock. There will be two passages bearing to the left. Both these lead towards the Hempel Highway. Take the uppermost one without the stream. Within a couple hundred feet this will slope downward into the highway.



Chris in a formation collage near the end of Hempel Highway (Photo by Nikki Fox)

The Hempel Highway is about a mile and a half long, borehole for most of its length, and trending with a slight uphill gradient. The downstream highway can be traversed on steep slippery clay banks or by sloshing along in a narrow muddy stream channel. After about a thousand feet, as you gain elevation in the highway, these slippery banks give way to breakdown and travel becomes

somewhat easier. Around the one third mark, a small dome on the right provides the only good water source along the trek. As you head into the upper part of the highway abundant gypsum encrusts the walls and other speleothems become more common. Near the end are some very nice helectite and gypsum flower displays.

To get to the connection with Canadian Hole, just follow the highway to its very end. There will be a few side passages. Ignore these and stay on the main route. This will become smaller and there will be a few short stoopways and hands/knees sections. Just before the connection starts there are a couple of dome complexes to the right. There is also one shallow pit on the left which is easily traversed by a short easy crawly ledge high on the right. There are two downsloping stooping holes to the right just before the end of the main passage. Both blow lots of air. Take the second, which is all the way at the end and about two hundred feet past the first.

This connection area is a bit complex. Air issues from several small passages and not all are readily traversable. This air, combined with the moist nature of the crawlways, is very chilly, so dress prepared. If you start into the second blowhole mentioned in the above paragraph the way should not be too confusing. The blowing stoopway slopes down to a drippy corridor with some pretty white formations. Continue ahead to where you encounter several intersecting low passages. Take the one kind of straight ahead which seems to move the most air. You'll know you're in the correct one if you are soon crawling over a low moist flowstone with a false floor which produces a pronounced hollowness as your boots scrape across it. Just past a hole in the floor of the flowstone is a junction. Stay low in the left crawl. After about thirty feet the crawl will join a small stream passage. You need to trend to the left, either in the streamway, or by staying high in a short series of clay crawls along the left bank of the stream. Within about fifty feet all routes converge in a small breakdown room of standing height. The stream dips under a low ledge and continues down a windy crawl.

The three times I've been through this connection, the last being in '92, I have no recollection of doing this crawl. There is another

route, which Corey and I looked for, but we did not find it. An account of the original connection trip by Canadian cavers John Mort, Anneliese Recklies, Alf Latham, and Al Thurston from the Canadian Caver, Vol. 9 No.2 relates how the two groups split up, each finding a different route through. One team followed the low crawl, but from the Canadian Hole side, while the other found a drier easier route. Once through, Corey and I checked from the Canadian Hole side, thinking it might be more obvious, but we still had no success. So at this time, I can offer no other recourse but to take the low windy crawl. This is crawl #6, and while only about 150' long, it is low, wet, and very chilling. Actually about half of it is not too bad as stream crawls go, but there are a couple of tight spots which are pretty miserable, though thankfully short.

The water crawl ends at a walking streamway. Bear left and follow until it becomes a stoopway, then a crawl. Just before this crawl there will be another crawl on the right. You will feel the air coming from here. This is the beginning of the "Log Roll". The name derives from the fact that due to its low wide nature some early cavers found that the most efficient means of locomotion was rolling along like a log. I tried this once, but quickly became nauseous, so I just slither along pushing with toes and digging with elbows. The crawl is about 500' long, and most of it is too low for hands and knees, but the floor is packed clay with not too much cobbly stuff, so it's not especially painful, except that by this point of the trip you're getting rather weary of crawling. Just about the time thoughts of how much longer is this thing enter your head the passage enlarges to hobbit size and then becomes walking for several hundred feet. Here it T's into a large canyon. Right leads to the bowels of Canadian Hole proper; left takes you to your goal.

This canyon just sort of evolves into the Monster Cavern Room at a point where massive breakdown is encountered. Clambering up over the first pile affords you your first view of the chamber, not that you will see much except a voluminous blackness and huge breakdown blocks all around you. Somewhere off in the distance ahead and to the left you'll hear the whisper of a waterfall. Of

course, if it's real wet, this whisper could be a roar. Working your way up over the car sized blocks you can reach a sort of high divide where the immensity of the room can truly be appreciated. To the right the breakdown jumble ascends steeply to near ceiling level, while the left vista reveals an avalanche of angular blocks sloping towards a bowl shaped gulf with the ghost of a high waterfall cascading into it. Thus the Monster Cavern is revealed. Dimensions are approximately 400x400 feet with a ceiling height of 100+ feet. At the time of its discovery it was the largest room in West Virginia. Today it still ranks as the second greatest known void in the state. It's an awesome place.

Our objective was to measure the waterfall drop. A rope had been secured along the wall of the room where it would be protected from the force of the falls. Closer inspection by Chris revealed a second rope that had been shredded. I surmised that it may have been left hanging close to the falls sometime in the past and high water had flailed it against the rocks. The rope presently hanging down from the blackness above looked in very good condition. Bill (Stone) had described the rigging to his best recollection and it sounded fine to me. Chris and I both weighted the rope before I started climbing just as a precaution.

The waterfall itself was much bigger than it had been a month earlier when Corey and I were there. Corey and I had witnessed only spigots of water, where now there were a couple of fire hydrants. The spray it generated was bone chilling. Still the rope hung away from the falls, so that you only got wet enough to keep cool as you climbed. I took a hundred foot survey tape up with me, tied another shorter tape to the end and lowered it to Chris. The hundred foot tape was completely unreeled and a short section of the tied piece was on the floor. Chris pulled and I got a reading of 103 free to the first bolt and 109 to the top rigging bolts. A new verified hundred footer for the state. I descended, then Chris bounced the drop. Waiting around got you pretty chilled, so we quickly tied the main rope back in its safe niche along the wall and prepared to head out.

It was around 8PM, we'd entered around 10 that morning, when the three of us had a bite and packed

up to begin the long reverse trek that would take us back to the base of Crookshank. Chris elected to number the crawls 1-14 since we had to do them all twice. We monitored our progress by counting down starting with #8, the log roll, and were relieved when we finally made it down to #14 a few hours later. The bottom of Crookshank was very cold. The huge volume pit acts as a cold trap. Nikki remarked that she even got colder while climbing. My advice would be not to attempt this trip during cold weather. A larger, slower climbing group could easily become hypothermic, leading to unpleasant incidents, of which there have been more than just a few in Crookshank over the years. Actually Robert Mothes discourages visitation from after Thanksgiving until spring, due to no winter maintenance on the access roads. It was around midnight when we got back to our vehicles. The trip for the three of us took about fourteen hours. I'm not getting any younger, but I'll probably do one more trip (in warm weather) sometime later this year before I forget the way again.

Terry McClanathan (NSS 12103)

Friars Hole Cave

Nov. 17, 2012

Chris Coates and Nikki Fox joined Terry McClanathan on a sport trip to Monster Caverns in this Pocahontas County, W.Va., cave. We entered Crookshank and passed two connection areas: the Rubber Chicken and Canadian Hole connections. Climbed and taped the waterfall drop in Monster Caverns at 109 feet, which was bolt climbed by Bill Stone and others in the 1980s. A 14 hour trip, and now a younger generation of cavers knows the complex route!

Farewell Hole

Nov. 22, 2012

On the way down for a mini vacation in New Orleans, Chris Coates and Nikki Fox bounced this 170-foot pit near Marion O. Smith's house in Tennessee.

Porters Cave

Dec. 1, 2012

Chris Coates, Nikki Fox and MUSG President Tim Kropp lead a group of people on a short sport trip for the JMU Adventure Club. 5 hours underground.

Harpers Pit

Dec. 2, 2012

Nikki Fox and Chris Coates lead a MUSG sport trip to this Pendleton County, W.Va., multidrop cave; rappels are 70, 27 and 22 feet.

Memorial Day Cave

Dec. 8, 2012

Nikki Fox and Chris Coates had a 12-hour trip with Terry McClanathan during GVKS Project Weekend. Got 153 feet in 8 stations.

Maxwelton Sink Cave

Dec. 15, 2012

Nikki Fox and Chris Coates worked on a project dig in this Greenbrier County, W.Va. cave. 13 hour trip.

Hellhole

Dec. 29, 2012 - Jan. 2, 2013

Nikki Fox and Chris Coates had their 3rd annual New Years project camp trip, joined by Tyler Wetzel. Surveyed 15 stations in passage above the Mud Rain Rift Drop (158 feet) with 203.2 feet. Also worked on widening a fissure passage above called Not So Happy Dome Pit (78 feet) and got 10-12 feet of progress. 77.5 hours underground over four days.

Jan 3rd, Norman Cave – Terry McClanathan

Friends of mine from Atlanta, Ga. have a cabin on some property near Renick, and they come up to W. Va. over Christmas break for the snow (they don't see snow often in Atlanta). I took them into the upper dry portions of Norman.

Participants were me, the Stembel family (John, Susan, and daughters Starr and Natalie who are 12 and 10 years old), and Bob Jones, also from Atlanta. Bob's parents live in White Sulphur Springs. Short two hour trip. Kids loved it.

That afternoon John and Bob went with me to try relocating a nearby pit I've been

to, but couldn't find the last time I tried to take some GVKS cavers there. The area is very overgrown in multiflora rose and blackberry brambles. Walk was a about a mile one way with 600' elevation gain in a foot of snow. It being cold and minus foliage we were successful in finding it. Name is Curry Pit which has a 105 entrance drop and a 48' drop into a sizable canyon.

Nov. 17th- Friars Hole

Nikki Fox, Chris Coates, and I went on a long day trip to Monster Cavern Room in Friars Hole via the Crookshank Pit entrance. Purpose was to tape the drop up to the top of the waterfall. This was climbed many years ago by a Bill Stone-Bob Jeffreys lead crew and a rope was left there.

A conversation with Bill about the rigging convinced me that it would be safe to do. The rope had been tied off along the wall of the room to keep it away from the abrading effects of the waterfall. We taped the drop at 109'. Quite impressive rappelling down that vastness beside the waterfall. The easier Canadian Hole entrance has been closed for many years so the trip back to Monster Cavern from either Crookshank or Snedegars is about 3-4 miles one way with a total of half mile of crawling spread out over seven major crawls. Total trip time for the three of us was 14 hours. Very cold at the bottom of Crookshank Pit. I don't recommend a cold weather trip there.

On Sat, Jan 5th, six of us did the first thru trip in TANGLEFOOT, deepest and longest cave in Md., and deepest in the northeast.

Pparticipants: Corey Hackley, Ryan Boyce, Joe Clemens, Adam Lake, Dave Schoenadel, Terry McClanathan

Hiked to upper entrance in 6-12 inches of snow. Entrance exhibiting signs of resident porcupine (fresh quills). This could possibility be the same porcupine which presented some logistics problems for the digging crew when they were engaged in opening the lower entrance. There are plenty of nooks in the upper cave to hide if you are a porcupine, so we thankfully had no encounters.

Split into two survey teams near the beginning of the stream and leapfrogged. Got a little over 400' (both teams). Lots of leads.

Stopped surveying where the passage enlarges to a good sized stream canyon and continued down through the mountain. The middle area is pretty nice with lots of potholing and waterfalls, the highest being over 20 feet. Lots of crawling after that.

One section very sloppy. Lots more crawling, some of it pretty low. Dave and I had to take different route for a couple hundred feet to bypass a particularly tight area where Dave did not fit on an earlier trip. Some pretty decent stuff after that; more waterfalls, some walking, rapidly downcutting stream canyon. The last couple hundred feet is through a couple of long, low crawls where the connection was dug.

A great effort by Ryan, Dave and some others on accomplishing this. The worst part is a very low belly wallow for one hundred feet through liquid mud. Did I mention that while one is engaged in this delightful misery, a cold wind is pulling in from the nearby lower entrance. This crawl wasn't fun when I did it at Thanksgiving, but it was a lot worse on this trip. Not as bad, though, as the alternative, which would have been turning around and going back out the upper entrance. There was some concern that that might be a possibility when Corey mentioned before we started that he sure hoped the cold air sucking into the lower entrance hadn't frozen the low crawls, causing them to frost heave into impassibility.

We finally exited around 11PM with Dave and I bringing up the rear. Trip time was in the 10-12 hour range. The thru trip is about 430 feet vertical and around 3500-4000' of traverse. For a non-vertical cave (no rigged pits), Tanglefoot is difficult. It's also rewarding, and really quite a unique cave; there are just a few parts that are best forgotten between trips. There are lots of virgin leads (I didn't say pleasant) and plenty of survey left to go. Anyone interested and able would be welcome. Terry McClanathan



Jerry has TSG hats available for sale for \$12 each. See Jerry if you are interested.

Tri-State Grotto is pleased to announce our planning of an NSS Pre-Convention camp near Williamsport, Maryland.

The dates are (Friday thru Sunday morning) August 2-4, 2013. Many of you will be driving right past our camp on the way to Convention. We cordially invite you to drop by for the weekend to include caving and other activities.

Check in as early as 1:00 pm on Friday. The event will be held at a commercial campground called Hagerstown KOA. The campground is right beside the Conococheague Creek allowing for kayaking or canoeing shuttles. Not far away, in Williamsport, Maryland is the historic C&O canal. Bike riding or hiking is possible along the photogenic tow path. Instead of giving us a rate for each site, the campground will give us a group rate for tent camping only, by charging per person. They have us in sites on both sides of a covered picnic pavilion and other sites very close to the creek. The all-or-nothing rate of \$20 per person will cover tent camping for both nights.

Participants will be responsible for their own meals. If you are bringing a motor home, trailer or other type of camper, call the campground directly to arrange for your vehicle to be near Tri-State Grotto

and the pavilion. The commercial campground rate applies for camper sites with hook-ups. Cabins are also available commercially.

Led caving trips that are being offered are: Jones Quarry Cave, Whittings Neck Cave (vertical) and Indian River Cave (a two-fer), Donaldsons Cave, Silers Cave, Molers Cave, McMahons Mill area caves (4), and possibly Cricket Maze Cave.

Franklin

County Grotto may also have a few led trips in Pennsylvania.

Directions: Northbound on I-81 cross over Potomac River to Maryland exit 4. Turn westbound on I-70 (towards Hancock). Travel one exit, to exit 24 and turn left on route 63. Right on Everly, left on Rock Hill, right on Kemps Mill Road, and straight in on Snug Harbor Lane. Or follow the signs. Campground phone number is 301-223-7571. GoogleEarth: 39 38.010N, 77 50.179W.

<http://www.hagerstownkoa.com/>

So we know how many people to expect, and what trips you are interested in, please pre-register by July 20, 2013 by writing a check to 'Tri-State Grotto' and mailing it to:

Tri-State Grotto
c/o Jerry Bowen
17817 Stone Valley Circle
Hagerstown, MD 21740-7774

Please note if you are tent camping or have made arrangements for a camper. If there are any questions, email: bookmaker-jb@myavtv.net

Gate Repairs to Baker Quarry

I want to update you with my schedule and to also coordinate gate repairs which we initially thought somewhere late March and early April 2013.

I will be having a series of surgeries over the next 4 months which will put me out of

commission for any labor-type work, but hope to be back to full strength by June.

Regarding the gating materials & supplies, I will discuss this with Bob Bennett so the gating and other related efforts will not fall between the cracks.

Thanks.

--Brent



Sinks of Gandy (J Bowen)



Hamilton Cave (J Bowen)

DEAD DOG DISPATCH

V.#28

I.#1

JAN

2013

#11



Hamilton Cave (J Bowen)



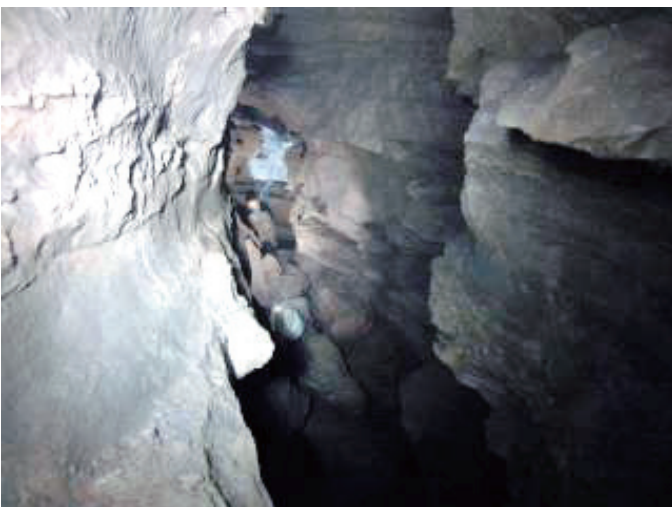
Tanglefoot (C Hackley)



Tanglefoot (C Hackley)



Christmas party (Cake by Jen Pinto)



Tanglefoot (C Hackley)



OMG who's foot is this?



CAVIN CALENDAR

JANUARY 5TH - FEBREARY 16



Sunday	Monday	Tuesday	Wednesday	Thursday	Friday	Saturday
Jan 6	Jan 7	Jan 8	Jan 9  MEETING 7PM	Jan 10	Jan 11	Jan 12 Adam Stephen dig - 9 am
Jan 13	Jan 14	Jan 15	Jan 16	Jan 17	Jan 18	Jan 19
Jan 20	Jan 21 MARTIN LUTHER KING DAY	Jan 22	Jan 23	Jan 24	Jan 25	Jan 26
Jan 27	Jan 28	Jan 29	Jan 30	Jan 31	Feb 1	Feb 2 
Feb 3 SUPER BOWL	Feb 4	Feb 5	Feb 6	Feb 7	Feb 8	Feb 9
Feb 10	Feb 11	Feb 12 FAT TUESDAY	Feb 13	Feb 14  VALENTINE'S DAY	Feb 15	Feb 16 Crystal Grottoes dig - 10am

DEAD DOG DISPATCH



Wow, Terry's at the Christmas Party & not caving! (J Bowen)

DEAD DOG DISPATCH

TRI-STATE GROTTO OF THE NSS
BOB BENNETT, EDITOR
464 HUCKLEBERRY DR
GERRARDSTOWN, WV 25420-0344
304-579-4304
gimpycaver@comcast.net

